

Technical Data Sheet

Peter Kwasny GmbH, Heilbronner Str. 96
74831 Gundelsheim / Germany
Phone: +496269 95-0, Fax: +496269 95-80
www.spraymax.com / www.kwasny.com / info@kwasny.de

Auto-K paint preparation 2-component polyester repair set (styrene reduced)

1000 g

Art. Nr. 745462



Product

Description / Purpose

Consisting of polyester repair resin, incl. hardener, glass fibre mat and plastic lid for mixing resin and hardener. Universally applicable for Rust through, cracks or holes on car bodies, caravans, boats, surfboards, gutters, pipes, etc.

Properties

- Contains everything for cost-effective and professional bridging of rust-throughs, cracks or holes on motor vehicles, caravans, boats and equipment in the house and garden.
- An also be used in model and mould making

Material base

Polyester resins

Colour

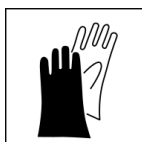
yellow transparent

Substrate

Bridging of rust-throughs, cracks or holes in metals and sheet metal (cleaned, ground, free of dust and grease) Plastics (cleaned, free of dust and grease).

Processing

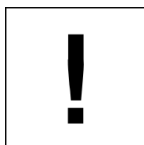
Protection measures



Wear personal protection equipment.
(gloves / goggles)

For more information, see safety data sheet.

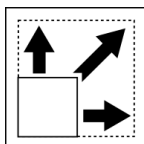
Processing conditions



Optimum application at 18° C - 25° C.

The substrate must be dry and free of dust and grease.

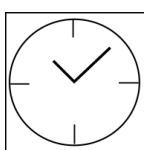
Coverage



PU 1000 g: 2 pieces per carton, set of tins with:

1. Hardener (0.12 m²)
2. Glass fibre mat (0.24 m²)
3. Plastic lid for mixing polyester repair resin with hardener

Drying



processing time: approx. 5 - 10 min. (at 20° C)

fully dried: approx. 20 - 30 min. (at 20° C)

Continue

Set-up:

1. First thoroughly remove rust and paint residues from the repair area with Auto-K sandpaper P60 (coarse) to remove rust, paint residues and grease.
2. Then sand and apply Auto-K Anti-Corrosion Primer (Art.Nr. 233058) spray on.
3. Mix well the required amount of Auto-K polyester repair resin with approx. 2% hardener.
Lay the cut glass-fibre mat smoothly on a solid board (e.g. Formica or glass) and apply the repair resin mixed with hardener with a thick coat with a putty knife.
4. Coat the repair area with mixed repair resin.
5. Place the glass fibre mat on the damaged area and carefully with the putty tool.

Pot life

At 20° C approx. 6 - 8 min.

Finish

Close the jar airtight with the lid and the tube with the plastic cap. Observe instructions on the product.

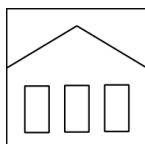
Additional Information

Important Information

The glass fibre mat should be cut so that the edges of the repair area are covered by at least 2 cm all around. After the drying time, even out any remaining

unevenness on the outside of the sheet metal with Auto-K filling filler. Please note: Tools used (spatula blade, mixing cup, etc.) immediately after finishing the work (e.g. with acetone / nitro thinner).

Shelf Life



Filler and hardener 1 year at 20° C in the original closed sealed container when stored properly in a dry place.

Disposal



Can and tube with cured material must be disposed of as hazardous waste.

Note

Before use, the safety instructions must always be read carefully and observed.

The contents in this technical data sheet were created with great care and reflect our current state of knowledge. They provide the user with application-specific information and do not promise certain properties. The information is non-binding and we accept no liability for its integrity, accuracy and completeness. They do not relieve the user of their duty to check the suitability of our product for the intended purpose. The warnings printed on our labels must be respected. Our brands and patents are protected by copyright. All rights reserved We reserve the right to update, amend or supplement the content of the information without prior notice.