

# Technical Data Sheet

Peter Kwasny GmbH, Heilbronner Str. 96  
74831 Gundelsheim / Germany  
Phone: +496269 95-0, Fax: +496269 95-80  
www.spraymax.com / www.kwasny.com / [info@kwasny.de](mailto:info@kwasny.de)

## Auto-K paint preparation Gas fibre filler (styrene-reduced)

250 g

Art. Nr. 745410



### Product

#### Description / Purpose

Fast curing 2-component filler compound based on elastic polyester resins with glass fibre chippings. Used to reinforce rusted sheet metal sheet metal and for bridging metal cracks and point-sized rust-throughs as well as for repairs of boats, caravans, surfboards and many other objects made of steel, iron, concrete and many commercially available plastics.

#### Properties

- Exceptional tear and fracture strength after curing
- Highly effective mixture of polyester resin and glass fibres
- For metal cracks and spot-sized rust-throughs

#### Material base

Specific polyester resin

#### Colour

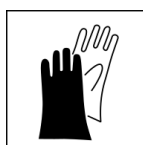
green (without hardener)

### Substrate

Steel, iron, concrete, various commercial plastics

### Processing

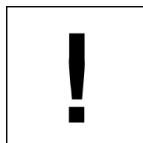
#### Protection measures



Wear personal protection equipment.  
(gloves / goggles)

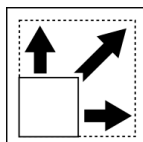
For more information, see safety data sheet.

**Processing conditions**



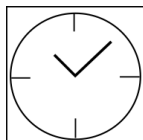
Optimum application at 18° C - 25° C.

**Coverage**



PU 250 g in set with hardener: 6 pieces per carton

**Drying**



Sandable after: 30 min at 20° C

**Continue**

Carefully clean the substrate of dust, grease and separating agents and sand.

Mix the required quantity of glass fibre filler with 2% hardener in the plastic lid.

**Pot life**

4 - 6 min at 20° C

**Finish**

Please clean any tools used (spatula blade, mixing cup, etc.) immediately after finishing work (e.g. with acetone / nitro thinner).

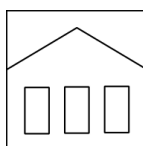
**Additional Information**

**Important Information**

**CAUTION!**

Do not return mixed filler back into the can.

**Shelf Life**



Filler and hardener 1 year at 20° C in the original closed sealed container when stored properly in a dry place.

**Disposal**



Can and tube with cured material must be disposed of as hazardous waste.

**Note**

Before use, the safety instructions must always be read carefully and observed.

The contents in this technical data sheet were created with great care and reflect our current state of knowledge. They provide the user with application-specific information and do not promise certain properties. The information is non-binding and we accept no liability for its integrity, accuracy and completeness. They do not relieve the user of their duty to check the suitability of our product for the intended purpose. The warnings printed on our labels must be respected. Our brands and patents are protected by copyright. All rights reserved We reserve the right to update, amend or supplement the content of the information without prior notice.