



Technical Data Sheet

Peter Kwasny GmbH, Heilbronner Str. 96
74831 Gundelsheim / Germany
Phone: +496269 95-0, Fax: +496269 95-80
www.spraymax.com / www.kwasny.com / info@kwasny.de

Auto-K Basic Rust converter liquid 250 ml Art. Nr. 745041



Product

Description / Purpose

Rust converter and epoxy primer in one.
For effective rust transformation and simultaneous priming on metallic substrates. Application in the field of cars, DIY, handicrafts and industry. Simply spray the transparent active ingredient directly on the rust. Rust is transformed into a black-grey protective layer which, after which can be overpainted with 1K topcoats after drying.
Available as 400 ml spray paint and 250 ml liquid.
Simply spray on the Auto-K rust converter. (Art.Nr. 233063).
Apply the liquid emulsion (Art.Nr. 745041) with a brush or roller.

Properties

- Rust converter and primer
- High efficiency
- Effective rust remediation
- Easy and fast processing
- Ideal for vehicles, DIY, crafts and industry
- Can be painted over with 1K topcoats (Shade)

Material base

Special resins

Colour

transparent

VOC Value (EU)

94,6

Substrate

Iron, ferrous metals, sheet metal, steel, sheet steel
(remove loose rust beforehand)

Processing

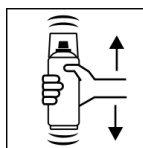
Protection measures



Wear personal protection equipment.
(gloves / goggles)

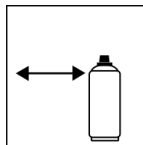
For more information, see safety data sheet.

Shake



Shake can thoroughly for 2 minutes

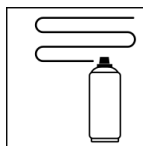
Spraying distance



10 cm - 20 cm,

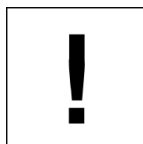
Hold the can as vertically as possible.

Spray passes



3 - 4 spray coats in thin layers:
approx. 10 - 12 µm

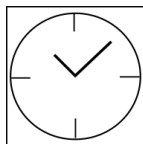
Processing conditions



Optimum application at 18° C - 25° C.

The substrate must be dry and free of dust and grease.

Drying



fully dried: approx. 12 - 24 h

recoatable: after 24 h

Continue

Paintwork:

1. Auto-K Basic Rust Converter Spray or Rust converter liquid

2. 1K top coat (colour shade).

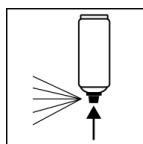
Our recommendation Auto-K car paint spray.

3. Auto-K protective clear coat (optional)

Can be painted over with itself at any time.

With 1K top coat (colour shade) after 24 h drying.

Finish



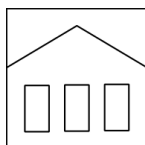
After finishing the painting process can turn over and spray valve empty to turn on to avoid sticking of the spray valve.

Additional Information

Important Information

Before starting work, the surfaces or objects to be painted must be cleaned and degreased accordingly. Remove loose rust.
Do not spray on synthetic resin painted surfaces, as the paint may pull up.

Shelf Life



The can is upright, dry and protected from chemical and mechanical influences to be stored and transported between 15 - 25° C.

The safety instructions on the can as well as all legal provisions of the storage location to note.

Disposal



The completely emptied spray cans must be disposed of in the recycling system. Cans with hardened material must be disposed of as special waste.

Note

Before use, the safety instructions must always be read carefully and observed.

The contents in this technical data sheet were created with great care and reflect our current state of knowledge. They provide the user with application-specific information and do not promise certain properties. The information is non-binding and we accept no liability for its integrity, accuracy and completeness. They do not relieve the user of their duty to check the suitability of our product for the intended purpose. The warnings printed on our labels must be respected. Our brands and patents are protected by copyright. All rights reserved We reserve the right to update, amend or supplement the content of the information without prior notice.