

# Technical Data Sheet

Peter Kwasny GmbH, Heilbronner Str. 96  
74831 Gundelsheim / Germany  
Phone: +496269 95-0, Fax: +496269 95-80  
www.spraymax.com / www.kwasny.com / [info@kwasny.de](mailto:info@kwasny.de)

## Auto-K paint preparation 2K- Epoxy resin (styrene-free)

500 g

Art. Nr. 745035



### Product

#### Description / Purpose

For repairing, bonding, coating and as a potting compound. Excellent adhesion and long-term protection due to epoxy base.  
Universally applicable on almost all substrates.

#### Properties

- Solvent-free, styrene-free and odour-reduced
- Excellent adhesion to almost all substrates / objects
- Very good grindability (after 16 h)
- Universally applicable on steel, iron, aluminium, wood, natural stone, concrete, ceramics etc.
- Very water resistant, less porous, lower moisture absorption, therefore waterproof coatings possible
- Particularly hard but also elastic, hardens without cracking and shrinkage
- Can be painted over with all commercially available 1K and 2K topcoat systems

#### Material base

Specific epoxy resin

#### Colour

yellowish

### Substrate

Iron, aluminium, galvanised steel (motor vehicles, gutters, pipes, etc.).

Various plastics (e.g. in boat building since

waterproof coating possible)

GRP moulded parts

Old paint, filler, wood, ceramics, natural stone and concrete (all substrates must be cleaned, sanded and free of grease)

## Processing

### Protection measures



Wear personal protection equipment.

(gloves / goggles)

For more information, see safety data sheet.

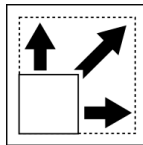
### Processing conditions



Optimum application at 18° C - 25° C.

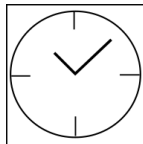
The substrate must be dry and free of dust and grease.

### Coverage



PU 500 g: 4 pieces per carton

### Drying



Processing time: approx. 30 min. (at 20° C).

After 16 hours the 2K epoxy resin can be recoated / painted.

Fully dried after approx. 7 days. (at approx. 20° C).

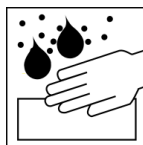
Do not return the mixed 2K epoxy resin.

### Continue

Thoroughly work the hardener into the epoxy mass at a rate of 50% until a homogeneous mass is obtained.

#### Example:

80g epoxy + 50% hardener (= 40g hardener) gives a total of 120g.



Sandability: after approx. 16 hours at 20° C.

### Pot life

At 20° C approx. 30 min.

### Finish

Close the jar airtight with the lid and the tube with the plastic cap. Observe instructions on the product.

## Additional Information

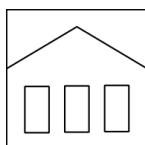
### Important Information

Do not return mixed epoxy filler to the can / or the respective container.

Sandable after approx. 16 hours at 20° C.

Please use tools (spatula blade, mixing cup, etc.) immediately after finishing the work clean (e.g. with acetone / nitro thinner).

### Shelf Life



Resin and hardener for at least 1 year at 20° C in the original sealed container when stored properly in a dry place. Follow the instructions on the observe.

### Disposal



Can and tube with cured material must be disposed of as hazardous waste.

### Note

Before use, the safety instructions must always be read carefully and observed.

The contents in this technical data sheet were created with great care and reflect our current state of knowledge. They provide the user with application-specific information and do not promise certain properties. The information is non-binding and we accept no liability for its integrity, accuracy and completeness. They do not relieve the user of their duty to check the suitability of our product for the intended purpose. The warnings printed on our labels must be respected. Our brands and patents are protected by copyright. All rights reserved We reserve the right to update, amend or supplement the content of the information without prior notice.