

Technical Data Sheet



Peter Kwasny GmbH, Heilbronner Str. 96
74831 Gundelsheim / Germany
Phone: +496269 95-0, Fax: +496269 95-80
www.spraymax.com / www.kwasny.com / info@kwasny.de

SprayMax®
2K Epoxy FILLER LIGHTWEIGHT
white
Art. Nr. 688001



Product

Description / Purpose

2 Component low density, low weight putty.
Application on Gel Coats, GFRP = glass-fibre reinforced plastic, wood, metal. (No adhesion on polyethylene, polypropylene and similar types of plastics). Mixing ration:
Comp. A: Hardener
Comp. B 1:1

Properties

- For applications above and below the waterline.
- High film built combined with low weight
- Low shrinkage (<0,5%).
- High mechanical resistance
- Easy to sand.
- Can be topcoated with common coating systems.

Colour

Light grey

Gloss level

semi gloss

VOC Value (EU)

Component A: 700 g/l

Component B: 700 g/l

Substrate

Gel Coats, GFRP = glass-fibre reinforced plastic, wood, metal, aluminum, except polyethylen and polypropylen.

The surface must be free of grease and dust, and surface temperature should be above freezing point to avoid condensation.

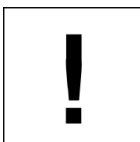
Processing

Protection measures



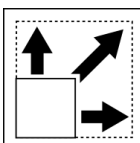
Wear personal protection equipment.
(respiratory mask/gloves/goggles)
For more information, see safety data sheet.

Processing conditions



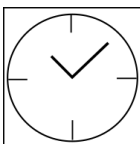
Optimum application at 18° C - 25° C and a relative humidity from 40 - 60 %.

Coverage



approx. 6 m²/kg at 200 µm dry film thickness

Drying



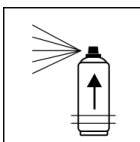
Ready for sanding:
20 hours (after sufficient curing)

The stated values refer to the above-mentioned processing conditions. The level of dryness is determined pursuant to DIN 53150.

Continue

Minimum layer thickness should be 10 mm.
temporary grindings with P 80 - P 120
final grinding with P 120 - P 240

Pot life



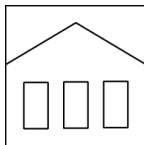
Approx. 50 min at 20 °C room temperature and a relative humidity of approx. 40 - 50 %.
The processing time depends on the ambient temperature. Higher temperatures reduce the pot life, lower temperatures will prolong it.

Additional Information

Important Information

Do not mix bigger amount of the product than the one that can be used within the use by date. Mix the ingredients together until a uniform colour is obtained. Pay attention on the sides and bottom of the container, the components are mixed in.
Water load should only be allowed after curing of the topcoat layer.

Shelf Life



Product components should be kept in tightly sealed containers, in dry and cool spaces at 10°C - 25°C. After every use, containers should be closed immediately! Keep away from fire and sunlight.

Component A - 12 month from production date

Component B - 12 month from production date

Disposal



The completely emptied spray cans must be disposed of in the recycling system. Cans with hardened material must be disposed of as special waste.

Note

For professional use only.

Identification, see safety data sheet.

The contents in this technical data sheet were created with great care and reflect our current state of knowledge. They provide the user with application-specific information and do not promise certain properties. The information is non-binding and we accept no liability for its integrity, accuracy and completeness. They do not relieve the user of their duty to check the suitability of our product for the intended purpose. The warnings printed on our labels must be respected. Our brands and patents are protected by copyright. All rights reserved We reserve the right to update, amend or supplement the content of the information without prior notice.