

Technical Data Sheet



Peter Kwasny GmbH, Heilbronner Str. 96
74831 Gundelsheim / Germany
Phone: +496269 95-0, Fax: +496269 95-80
www.spraymax.com / www.kwasny.com / info@kwasny.de

SprayMax® **1K Surface Control Spray 400 ml** **Art. Nr. 680225**



Product

Description / Purpose

Surface Control Spray is used to achieve a short-lasting shine on spray sample plates for checking the colour. Also, surface unevenness on sanded or pre-sanded vehicle surfaces can be recognised.

Properties

- Odourless
- Evaporates completely after use without leaving any residues (approx. 60 minutes)

Material base

Special solvent combination

VOC Value (EU)

765 g/l

Substrate

Spray sample plate to check the colour:

Apply Surface Control Spray to the sample plate which is coated with a base coat to simulate a short-lasting shine (and/or simulate the clearcoat). We also recommend to apply the product onto a vehicle part for control purposes.

Sanding / surface control:

Apply the Surface Control Spray to the sanded or pre-sanded area. Areas of unevenness can be easily detected thanks to the short-lasting shine.

Comment:

- Reduce the evaporation time by blowing compressed air across the surface

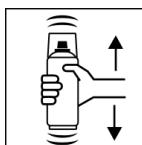
Processing

Protection measures



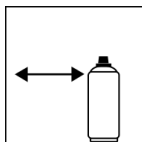
Wear personal protection equipment.
(respiratory mask/gloves/goggles)
For more information, see safety data sheet.

Shake



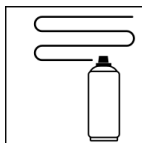
Shake can thoroughly for at least 2 minutes from when the mixing balls are heard.

Spraying distance



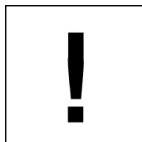
15 - 20 cm

Spray passes



Approx. 1 spray coats until an even glossy surface is created.

Processing conditions

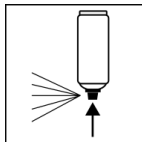


Optimum application at 18° C - 25° C and a relative humidity from 40 - 60 %.

Continue

Evaporates without leaving any residues after approx. 60 minutes. Can be wiped with a cloth.

Finish



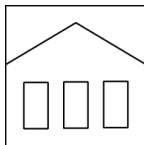
After painting, turn the can upside down and spray the valve until empty.

Additional Information

Important Information

UV blockers in the clearcoat can cause differences in colour tone for certain colours compared to the use of Surface Control Spray. We therefore recommend subsequent control with the corresponding clearcoat in these cases.

Shelf Life



60 months

The usage period refers to an unused can that is stored correctly at a temperature of 15 - 25° C and a relative humidity below 60%. The can must be stored and transported in an upright position in a dry place where it is protected against chemical and mechanical influences. The safety information on the can and all statutory provisions applicable for the storage site must be observed.

Disposal



The completely emptied spray cans must be disposed of in the recycling system. Cans with hardened material must be disposed of as special waste.

Note

For professional use only.

Identification, see safety data sheet.

The contents in this technical data sheet were created with great care and reflect our current state of knowledge. They provide the user with application-specific information and do not promise certain properties. The information is non-binding and we accept no liability for its integrity, accuracy and completeness. They do not relieve the user of their duty to check the suitability of our product for the intended purpose. The warnings printed on our labels must be respected. Our brands and patents are protected by copyright. All rights reserved We reserve the right to update, amend or supplement the content of the information without prior notice.