

Technical Data Sheet



Peter Kwasny GmbH, Heilbronner Str. 96
74831 Gundelsheim / Germany
Phone: +496269 95-0, Fax: +496269 95-80
www.spraymax.com / www.kwasny.com / info@kwasny.de

SprayMax® 1K Structure paint medium black 400 ml Art. Nr. 680180



Product

Description / Purpose

Special product for imitation of automotive plastic textured surfaces, particularly for plastic bumpers. Various structural finishes available. An ideal addition to the already available DTP sprays and Plastic sprays.

Properties

- Choice of structural finishes
- Easy to use
- Dries very quickly
- Can be topcoated with all conventional 1K basecoat and 2K topcoat systems
- Also in combination with the K DTP- and Plastic sprays

Material base

Nitro combination resin

Colour

Black

VOC Value (EU)

645 g/l

Substrate

Plastics primed with SprayMax® 1K Plastic Adhesion Promotor. The damaged area must be dry and free of grease and dust and all rust needs to be removed.

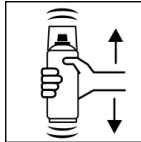
Processing

Protection measures



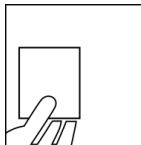
Wear personal protection equipment.
(respiratory mask/gloves/goggles)
For more information, see safety data sheet.

Shake



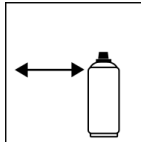
Shake can thoroughly for at least 2 minutes from when the mixing balls are heard.

Spray to test



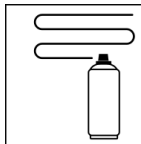
After shaking the can, test spray and check compatibility with the surface and the colour.

Spraying distance



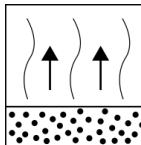
15 cm - 20 cm

Spray passes



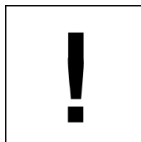
Dry film thickness 30 - 40 μm
(approx. 2 - 3 spray coats)

Flash-off time



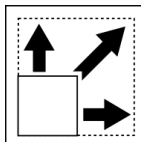
Flash time: approx. 5 min between each spray coat

Processing conditions



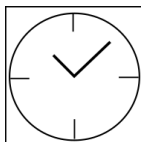
Optimum application at 18° C - 25° C and a relative humidity from 40 - 60 %.

Coverage



approx. 0,5 - 0,75 m² at 30 - 40 μm dry film thickness

Drying



TG1 dust dry: 5 - 10 min
TG3 dry to touch: approx. 30 - 40 min
TG5 fully cured: approx. 24 h / 20° C

The stated values refer to the above mentioned processing conditions. The level of dryness is determined pursuant to DIN 53150.



IR- drying possible,
Observe equipment description

Continue

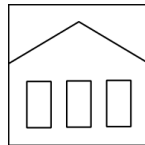
Can be topcoated with itself after 15 min and with all conventional 1K topcoats and basecoats.

Additional Information

Important Information

Do not spray on surfaces previously coated with synthetic resin substances as the original coat may lift.

Shelf Life



60 months
The usage period refers to an unused can that is stored correctly at a temperature of 15 - 25° C and a relative humidity below 60%. The can must be stored and transported in an upright position in a dry place where it is protected against chemical and mechanical influences. The safety information on the can and all statutory provisions applicable for the storage site must be observed.

Disposal



The completely emptied spray cans must be disposed of in the recycling system. Cans with hardened material must be disposed of as special waste.

Note

For professional use only.
Identification, see safety data sheet.

The contents in this technical data sheet were created with great care and reflect our current state of knowledge. They provide the user with application-specific information and do not promise certain properties. The information is non-binding and we accept no liability for its integrity, accuracy and completeness. They do not relieve the user of their duty to check the suitability of our product for the intended purpose. The warnings printed on our labels must be respected. Our brands and patents are protected by copyright. All rights reserved We reserve the right to update, amend or supplement the content of the information without prior notice.