

Technical Data Sheet

Peter Kwasny GmbH, Heilbronner Str. 96
 74831 Gundelsheim / Germany
 Phone: +496269 95-0, Fax: +496269 95-80
 www.spraymax.com / www.kwasny.com / info@kwasny.de

Auto-K Universal
Car paint spray black mat
500 ml
Art. Nr. 633021



Product

Description / Purpose

The Auto-K product line UNIVERSAL is a fast drying special combination paint. Ideal for cost-optimized and color-accurate paintwork repairs. The product impresses with its simple Handling and its universal applicability (metal, sheet steel, plastic, etc.) It is suitable for automotive and also not automotive applications, such as decorative liveries.

Properties

- Painting car parts
- Objects made of sheet metal, metal and plastic
- Upgrading and beautification of individual car parts
- Easy processing, good flow
- Good adhesion, very productive
- Fast drying

Material base

Nitro combination resins

Gloss level

mat

Substrate

metal, sheet steel
 (cleaned, sanded, free of dust and grease)
 Plastic (Please check for compatibility)

Processing

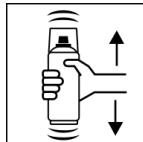
Protection measures



Wear personal protection equipment.
(gloves / goggles)

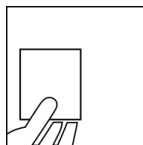
For more information, see safety data sheet.

Shake



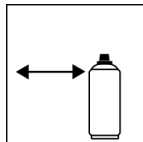
Shake can thoroughly for 2 minutes
- starting from when the mixing balls are heard.

Spray to test



Test spray after shaking the can - Compatibility with the respective substrate as well as Check hue.

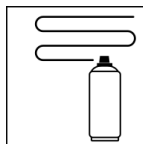
Spraying distance



15 cm - 25 cm,

Hold the can as upright as possible.

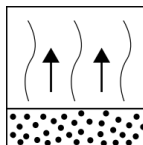
Spray passes



2 spray coats: approx. 50 - 60 µm

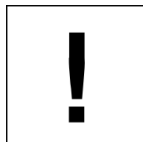
Crossing means spraying on a first horizontal and then a vertical layer.

Flash-off time



Flash time: approx. 2 - 3 min between each spray coat.

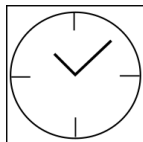
Processing conditions



Optimum application at 18° C - 25° C.

The substrate must be dry and free of dust and grease. Avoid direct sunlight and wind.

Drying



dust dry: 10 - 15 min

dry to touch: approx. 2 - 3 hours

fully dried: approx. 12 hours

Continue

Metal:

1. Auto-K anti-corrosion primer

2. Auto-K Filler / Primer

3. Universal car paint spray

Recoat with itself at any time.

With clear coat at any time.

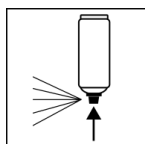
Plastic:

1. Auto-K plastic adhesion promoter
2. Universal car paint spray

Recoatable with itself at any time.

With clear coat at any time.

Finish



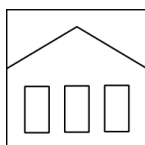
After finishing the painting process can turn over and spray valve empty to turn on to avoid sticking of the spray valve.

Additional Information

Important Information

Do not spray on synthetic resin painted surfaces, as the paint may pull up. Do not use for acrylic glass!
Not on motorcycle helmets or other safety apply relevant parts!

Shelf Life



The can is upright, dry and protected from chemical and mechanical influences to be stored and transported between 15 - 25° C.

The safety instructions on the can as well as all legal provisions of the storage location to note.

Disposal



The completely emptied spray cans must be disposed of in the recycling system. Cans with hardened material must be disposed of as special waste.

Note

Before use, the safety instructions must always be read carefully and observed.

The contents in this technical data sheet were created with great care and reflect our current state of knowledge. They provide the user with application-specific information and do not promise certain properties. The information is non-binding and we accept no liability for its integrity, accuracy and completeness. They do not relieve the user of their duty to check the suitability of our product for the intended purpose. The warnings printed on our labels must be respected. Our brands and patents are protected by copyright. All rights reserved We reserve the right to update, amend or supplement the content of the information without prior notice.