

# Technical Data Sheet



The United States of America:  
by Peter Kwasny Inc.  
62-64 Enter Lane  
Islandia, NY 11749

Distributed in

Canada:  
Peter Kwasny Spraypaint Canada Inc.  
40 University Avenue, Suite 904  
Toronto, ON. M5J 1T1

Toll free North America  
Phone: 1-844-426-6330 / Fax: 1-866-226-6434  
order@kwasny.us / service@kwasny.us  
www.spraymax.com

## SprayMax® 1K E-COAT Primer Olive brown 318 g NET WT. 11.2 oz Art. Nr. 3680237



### Product

#### Description / Purpose

SprayMax E Coat primers are a true direct to metal coating matching the color and gloss of factory primers and e-coat colors.  
SprayMax E Coat primers provide superior corrosion protection. Perfect color and gloss match for restoring the original appearance and gloss of factory ecoats. Use E-COAT on any e-coated panel, vehicle floor, engine bay, core support, trunk area, any inner body panel.

#### Properties

- Superior corrosion protection
- Excellent color and gloss match to OEM factory coatings
- Direct to steel and aluminum
- Good hiding
- Available in 8 popular OEM colors
- Compatible with most automotive basecoats

#### Material base

Special resins

#### Colour

Olive brown

#### Gloss level

Matte

<b>Solid content</b>	approx. 29,1 % by weight relating to the diluted paint
<b>EPA Coating Category</b>	ABP Auto Body Primer PWR Limit 1.55
<b>CARB Aerosol Rule Coating Category (01/2017)</b>	ABP Auto Body Primer PWR Limit 0.95

**Substrate**

Metal, Steel (cleaned and sanded).  
 Aluminum (cleaned and sanded).  
 E-coat (cleaned and sanded)  
 Primed, filled areas and well preserved factory or old paint (cleaned and sanded).  
 The damaged area must be dry and free of grease and dust and all rust needs to be removed.

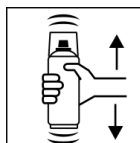
**Processing**

**Protection measures**



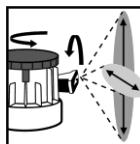
Wear personal protection equipment.  
 (respiratory mask / gloves / goggles)  
 For more information, see safety data sheet.

**Shake**



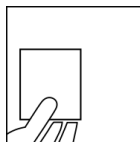
Shake can thoroughly for at least 2 minutes from when the agitation balls are heard.

**Adjustable Nozzle**



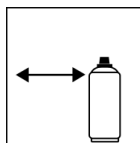
Set the variable spray nozzle to the size and pattern of the damage.

**Spray to test**



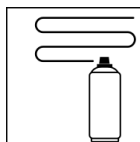
After shaking the can, test spray and check compatibility with the surface and the colour.

**Spraying distance**



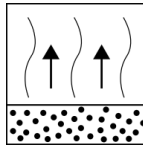
6 - 8 inches / 15 - 20 cm

**Spray passes**



Dry film thickness 1.2 - 1.8 mil (30 - 45 µm)  
 (approx. 1 - 2 spray coats)

**Flash-off time**



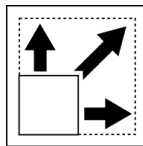
Flash time: approx. 5 - 10 min between each spray coat

**Processing conditions**



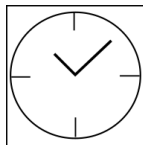
Optimum application at 64° F - 77° F (18° C - 25° C) and a relative humidity from 40 - 60 %.

**Coverage**



approx. 5.4 sq ft (0.5 m<sup>2</sup>) / aerosol at approx. 1.2 - 1.8 mil (30 - 45 µm) dry film thickness

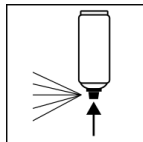
**Drying**



dust dry: 25 min  
dry to touch: approx. 90 min

The stated values refer to the above mentioned processing conditions. The level of dryness is determined pursuant to DIN 53150.

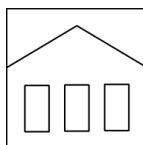
**Finish**



After painting, turn the can upside down and spray the valve until empty.

**Additional Information**

**Shelf Life**



60 months  
The usage period refers to an unused can that is stored correctly at a temperature of 60° F - 77° F / 15 - 25° C and a relative humidity below 60%. The can must be stored and transported in an upright position in a dry place where it is protected against chemical and mechanical influences. The safety information on the can and all statutory provisions applicable for the storage site must be observed.

**Disposal**



The completely emptied spray cans must be disposed of in the recycling system. Cans with hardened material must be disposed of as special waste.

**Note**

For professional use only.

Identification, see safety data sheet.

The contents in this technical data sheet were created with great care and reflect our current state of knowledge. They provide the user with application-specific information and do not promise certain properties. The information is non-binding and we accept no liability for its integrity, accuracy and completeness. They do not relieve the user of their duty to check the suitability of our product for the intended purpose. The warnings printed on our labels must be respected. Our brands and patents are protected by copyright. All rights reserved. We reserve the right to update, amend or supplement the content of the information without prior notice.