

## Technical Data Sheet

Peter Kwasny GmbH, Heilbronner Str. 96  
74831 Gundelsheim / Germany  
Phone: +496269 95-0, Fax: +496269 95-80  
[www.spraymax.com](http://www.spraymax.com) / [www.kwasny.com](http://www.kwasny.com) / [info@kwasny.de](mailto:info@kwasny.de)

**belton® free**  
**AQUAprimer 400 ml**  
**white matt**  
**Art. No. 332601**



### Product

#### Description / Area of use

Water-based primer for environmentally conscious spray painting.

For many substrates, preferably galvanised steel, aluminium, for non-ferrous metals, absorbent or treated wood and ceramic.

Priming is generally recommended for permanent corrosion protection.

#### Product benefits

- Water-based and odourless
- Virtually solvent-free (< 1% solvent in the laque)
- Very good levelling
- Creates a closed, smooth surface
- Excellent adhesion
- Weather and UV-resistant
- Can be used indoors and outdoors
- Optimum preparation for the top coat

#### Material base

Water-based polyurethane dispersion

## Substrate

Ferrous metals, galvanised steel, aluminium, ceramic, non-ferrous metals, paintable plastics, absorbent or treated wood.

Check old paints, as surface defects may occur.

## Processing

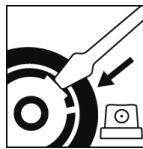
### Protection measures



Wear personal protection equipment.  
(gloves / goggles)

For more information, see safety data sheet.

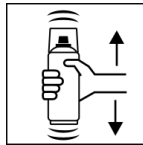
### Spray protection



Remove the spray safety device by first removing the spray head. Insert a screwdriver between the tab and the retaining ring. Lift out the fuse with a gentle downward movement.

Keep these and use it again as a spray fuse when the laque work is finished.

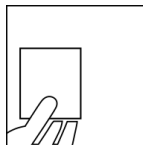
### Shake



Put one of the two spray heads with one light twisting movement back onto the spray can.

Shake it thoroughly for 1 minute so that the lacquer material are evenly distributed.

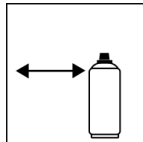
### Spray to test



Before you paint the actual object, check the compatibility of the spray paint on a test object.

After the test spraying, wipe off any paint residue on the spray head.

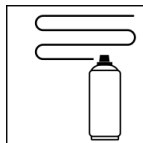
### Spraying distance



10 cm - 20 cm

Hold the can upright.

### Spray passes



Always start outside the object to avoid overcoating.

Pre-coat with a thin spray coat.

After approx. 5 - 10 min. finish in thin layers.

Avoid short sprays!

Between sprays, wipe the spray head with a clean, damp cloth.

## Processing conditions



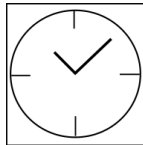
The ideal working temperature is 15 - 25° C.

The relative air humidity should be < 60 %.

Avoid direct sunlight and drafts.

The surface to be painted must be clean, dry and free of grease. Sanding substrates.

## Drying



dust dry: after approx. 120 min

dry to touch: after approx. 12 hours

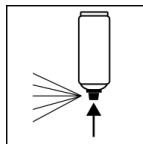
Can be painted over with belton free AQUAcolours colour paint (colouring top coat) after approx. 24 h.

## Painting structure

### Paint structure:

1. belton free AQUAprimer (matt white)
2. belton free QUAColours coloured paint (colour tone)
3. Depending on your requirements and the substrate, you can If required, your object with a belton free AQUAcolours clear lacquer transparent overcoat, for even greater weather resistance.

## Finish



When you have finished the painting job, clean the spray head under water.

Remove the spray head for storage, reinsert the spray fuse and replace the spray head.

## Additional Information

### Please note



Avoid shocks, friction and impacts.

After longer breaks, wipe the laque off the spray head with a damp cloth, to prevent bonding the spray head.

### The following applies to water-based paint systems:

The surface, which initially appears somewhat wavy when wet (in the first few seconds), smoothes out to an even, smooth, flawless paint surface as it dries.

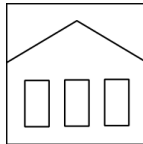
Please note that overcoating and slight foaming may

occur when test spraying and painting in one area and slight foaming may occur. This is NO product defect!

With proper painting in thin, even layers, belton free achieves a flawless painting result. As with all water-based paints, so are also with belton free the drying times greatly from the Ambient temperature and especially from the relative humidity dependent. An air humidity of over 60% leads to a significantly longer drying time.

The supply of warm air means that drying times can be shortened.

## Shelf Life



The can must be stored and transported in an upright position between 15 - 25° C and a relative humidity of not more than 60 % in a dry place where it is protected against chemical and mechanical influences. The safety instructions on the can as well as all legal provisions of the storage location have to be noted.

## Disposal



The completely emptied spray cans must be disposed of in the recycling system. Cans with hardened material must be disposed of as special waste.

## Note

Before use, carefully read the safety instructions on the label of the spray can must be read carefully and observe them.

The contents in this technical data sheet were created with great care and reflect our current state of knowledge. They provide the user with application-specific information and do not promise certain properties. The information is non-binding and we accept no liability for its integrity, accuracy and completeness. They do not relieve the user of their duty to check the suitability of our product for the intended purpose. The warnings printed on our labels must be respected. Our brands and patents are protected by copyright. All rights reserved We reserve the right to update, amend or supplement the content of the information without prior notice.