

Technical Data Sheet

Peter Kwasny GmbH, Heilbronner Str. 96
74831 Gundelsheim / Germany
Phone: +496269 95-0, Fax: +496269 95-80
www.spraymax.com / www.kwasny.com / info@kwasny.de

belton® free
AQUAprimer 400 ml
white matt
Art. Nr. 332601



Product

Description / Area of use

Water-based primer for many substrates, preferably for non-ferrous metals, galvanised steel, aluminium and wood.

Universally applicable for indoor and outdoor use. Creates a closed, smooth surface that is ideal for the subsequent top coat. Excellent adhesion promotion as optimum preparation for the top coat. First-class painting results, without unpleasant odours, aromatics, restrictions or ecological concerns.

Product benefits

- Water-based primer
- Virtually odourless
- Virtually solvent-free
- Creates a smooth surface
- Excellent adhesion
- Fast drying (dust-dry)
- Weather and UV-resistant
- Can be used indoors and outdoors
- Excellent CO2 balance
- Optimum preparation for the top coat

Material base

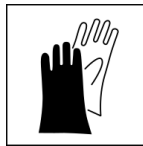
Water-based polyurethane dispersion

Substrate

Ferrous metals, galvanised steel, aluminium, non-ferrous metals and wood

Processing

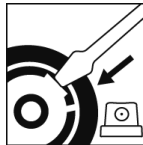
Protection measures



Wear personal protection equipment.
(gloves / goggles)

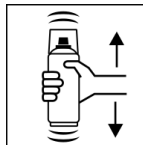
For more information, see safety data sheet.

Spray protection



Remove the spray safety device by first removing the spray head. Insert a screwdriver between the tab and the retaining ring. Pry with one downward movement gently releases the fuse. Do not throw away the spray fuse. This can be done after the painting work has been completed can be used again as a spray safety device.

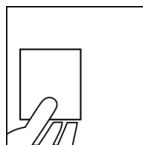
Shake



Put one of the two spray heads with one light twisting movement back onto the spray can.

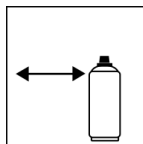
Shake it thoroughly for 1 minute so that the color pigments are evenly distributed.

Spray to test



Before you paint the actual object, test the color and compatibility of the spray paint on a test object.

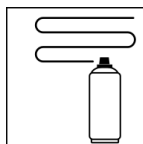
Spraying distance



10 cm - 20 cm

Hold the can upright.

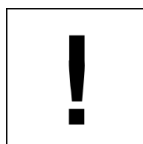
Spray passes



Start outside the object to avoid overcoating.

Apply a thin spray coat. Pre-coat with a thin spray coat. After approx. 5 - 10 min. apply a final coat with even coverage. Avoid short sprays!

Processing conditions



The ideal working temperature is approx. + 20° C.

Avoid direct sunlight and drafts. Please check plastic substrates for compatibility. Please do not coat any

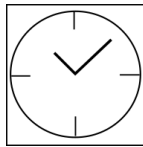
safety-relevant plastic parts.

Do not spray on synthetic resin painted surfaces, as the paint may pull up.

The surface to be painted must be clean, dry and free of grease.

Sand ferrous metals and wood before painting.

Drying



dust dry: after approx. 90 min

dry to touch: after approx. 8 hours

Can be painted over with belton free AQUAcolours colour paint (colouring top coat) after approx. 24 h.

Painting structure

Galvanized steel, aluminum and non-ferrous metals (NF metals) must be pre-primed with belton free AQUAprimer white matt (Art.No. 332601).

Optionally prime glass and ceramics.

Wood:

Pre-treat absorbent wooden substrates and treated wood with belton free AQUAprimer (Art.No. 332601).

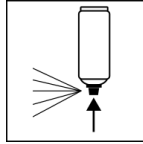
Paint structure (1-coat):

1. belton free AQUAcolours coloured paint (colour tone)
2. For even greater weather resistance and depending on requirements and substrate, you can also coat your object with a belton free AQUAcolours clear varnish transparent, overcoat.

Paint structure (2-layer):

1. belton free AQUAprimer (matt white)
2. belton free AQUAcolours coloured paint (colour tone)
3. For even greater weather resistance and depending on requirements and substrate, you can also coat your object with a belton free AQUAcolours clear varnish transparent, overcoat.

Finish



When you have finished the painting job, wipe the paint off the spray head with a damp cloth.

For storage, first remove the spray head, reinsert the spray guard and replace the spray head.

Additional Information

Please note

Between spraying cycles or during longer breaks the paint from the spray head with a damp cloth, to prevent the spray head.

The following applies to water-based paint systems:

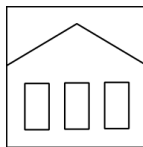
The surface, which initially appears somewhat wavy when wet (in the first few seconds), smoothes out to an even, smooth, flawless paint surface as it dries.

Please note that overcoating and slight foaming may occur when test spraying and painting in one area and slight foaming may occur.

This is NO product defect! With proper painting in thin, even layers, belton free achieves a flawless painting result. As with all water-based paints, so are also with belton free the drying times greatly from the Ambient temperature and especially from the relative humidity dependent. A low relative humidity leads to shorter, a high leads to longer drying times.

Through the drying times can be shortened by supplying warm air.

Shelf Life



The can is standing upright between 15 - 25° C and a relative humidity of not more than 60 %, stored and transported dry and protected from chemical and mechanical influences.

The safety instructions on the can as well as all legal provisions of the storage location to note.

Disposal



The completely emptied spray cans must be disposed of in the recycling system. Cans with hardened material must be disposed of as special waste.

Note

Before use, the safety instructions must always be read carefully and observed.

The contents in this technical data sheet were created with great care and reflect our current state of knowledge. They provide the user with application-specific information and do not promise certain properties. The information is non-binding and we accept no liability for its integrity, accuracy and completeness. They do not relieve the user of their duty to check the suitability of our product for the intended purpose. The warnings printed on our labels must be respected. Our brands and patents are protected by copyright. All rights reserved We reserve the right to update, amend or supplement the content of the information without prior notice.