

Technical Data Sheet

Peter Kwasny GmbH, Heilbronner Str. 96
74831 Gundelsheim / Germany
Phone: +496269 95-0, Fax: +496269 95-80
www.spraymax.com / www.kwasny.com / info@kwasny.de

Auto-K Basic Zinc dust-Spray 150 ml Art. Nr. 33054



Product

Description / Purpose

Auto-K Zinc Dust Spray is a highly effective, metallic, zinc-based anti-rust primer. The high zinc content seals long-term and guarantees a high level of protection against corrosion, even at temperatures above 400° C. The product is Excellent for all car parts that do not have to be painted over, e.g. Exhaust systems, welds, galvanized parts and body interiors.

Properties

- Highly effective metallic rust protection primer
- Prevents corrosion without additional repaint
- Particularly suitable for all objects that should not be painted, e.g. parts in the engine compartment, Exhaust pipes, welds, galvanized parts and body interiors.

Material base

Special binder combination

Colour

Grey

VOC Value (EU)

56,64 g/l

Substrate

Iron, Steel, galvanized steel, welds
(cleaned, free of dust and fat free)

Processing

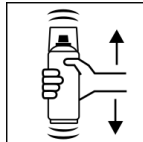
Protection measures



Wear personal protection equipment.
(gloves / goggles)

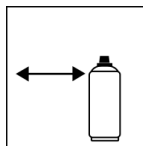
For more information, see safety data sheet.

Shake



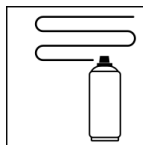
Shake can thoroughly for 2 minutes
- starting from when the mixing balls are heard.

Spraying distance



15 cm - 25 cm

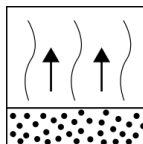
Spray passes



2 - 3 spray coats: approx. 40 - 50 μm
Start spraying outside of the Paint surface and wear evenly in Cross several thin coats on.

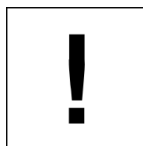
Cross coat means spraying on a first horizontal and then one vertical layer.

Flash-off time



Flash time: approx. 2 - 3 min between each spray coat. To avoid overspray is for ensure adequate air supply.

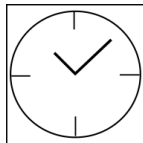
Processing conditions



Optimum application at 18° C - 25° C.

The substrate must be dry and free of dust and grease.

Drying



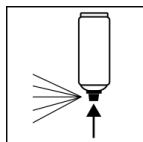
TG1 dust dry: 10 - 15 min

TG2 dry to touch: approx. 30 min.

Continue

No pre-treatment with primers and none Subsequent treatment with additional top coats and clear coats necessary. Recoatable with itself, at any time.

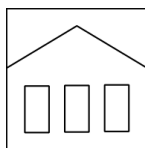
Finish



After painting, turn the can upside down, spray the valve until empty and put the lid on the can.

Additional Information

Shelf Life



The can is upright, dry and protected from chemical and mechanical influences to be stored and transported between 15 - 25° C.

The safety instructions on the can as well as all legal provisions of the storage location to note.

Disposal



The completely emptied spray cans must be disposed of in the recycling system. Cans with hardened material must be disposed of as special waste.

Note

Identification, see safety data sheet.

The contents in this technical data sheet were created with great care and reflect our current state of knowledge. They provide the user with application-specific information and do not promise certain properties. The information is non-binding and we accept no liability for its integrity, accuracy and completeness. They do not relieve the user of their duty to check the suitability of our product for the intended purpose. The warnings printed on our labels must be respected. Our brands and patents are protected by copyright. All rights reserved We reserve the right to update, amend or supplement the content of the information without prior notice.