

# Technical Data Sheet

Peter Kwasny GmbH, Heilbronner Str. 96  
74831 Gundelsheim / Germany  
Phone: +496269 95-0, Fax: +496269 95-80  
www.spraymax.com / www.kwasny.com / info@kwasny.de

**Auto-K Special**  
**Heat resistant 650° C black**  
**150 ml**  
**Art. Nr. 33041**



## Product

### Description / Purpose

The highly heat-resistant special paint with improved formulation and significant reduction in hazardous substances is especially for temperature-stressed parts suitable.

Applicable in the engine area, on the exhaust system, on two-wheelers, grills, fire bowls, stovepipes, Fireplaces and wherever temperatures go up 650° C occur.

The paint only hardens by slowly heating it up off from 250° C.

### Properties

- For parts subject to high temperatures
- Resistant and permanently weatherproof
- Highly heat-resistant up to 650° C

### Material base

Silicone resins

### Colour

black

### VOC Value (EU)

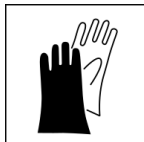
66,61

## Substrate

Temperature-stressed metal parts on the vehicle and in the household such as steel, exhaust, garden grill, Boilers or cast iron stoves.

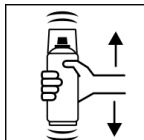
## Processing

### Protection measures



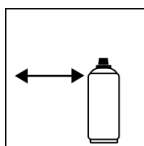
Wear personal protection equipment.  
(gloves / goggles)  
For more information, see safety data sheet.

### Shake



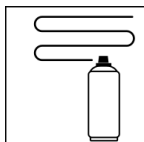
Shake can thoroughly for 2 minutes  
- starting from when the mixing balls are heard.

### Spraying distance



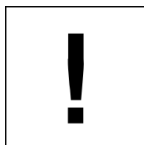
15 cm - 15 cm,  
Hold the can as upright as possible.

### Spray passes



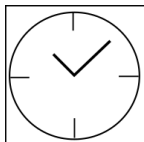
Apply a thin spray coat after 3 - 5 min.  
Remove paint with 1 - 2 rich spray coats.  
With 1 cross pass approx. 20 µm

### Processing conditions



Optimum application at 18° C - 25° C.  
Remove loose rust. The substrate must be dry and  
free of dust and grease.

### Drying



dust dry: 10 min  
dry to touch: 25 min  
Heat paint SLOWLY  
Paint only hardens at temperatures above +250° C.

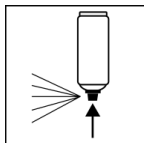
### Continue

#### Paintwork:

The application takes place directly on the metal  
underground.

No pre-treatment with primers and no post-treatment  
with further cover and clear coats required.

### Finish



After finishing the painting process can turn over and  
spray valve empty to turn on to avoid sticking of the  
spray valve.

## **Additional Information**

### **Important Information**

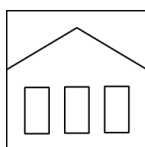
Do not prime!

Paint only hardens at temperatures above +250° C.

Please heat SLOWLY.

Do not spray on synthetic resin painted surfaces, as the paint may pull up.

### **Shelf Life**



5 years

The can is upright, dry and protected from chemical and mechanical influences to be stored and transported between 15 - 25° C.

The safety instructions on the can as well as all legal provisions of the storage location to note.

### **Disposal**



The completely emptied spray cans must be disposed of in the recycling system. Cans with hardened material must be disposed of as special waste.

### **Note**

Before use, the safety instructions must always be read carefully and observed.

The contents in this technical data sheet were created with great care and reflect our current state of knowledge. They provide the user with application-specific information and do not promise certain properties. The information is non-binding and we accept no liability for its integrity, accuracy and completeness. They do not relieve the user of their duty to check the suitability of our product for the intended purpose. The warnings printed on our labels must be respected. Our brands and patents are protected by copyright. All rights reserved We reserve the right to update, amend or supplement the content of the information without prior notice.