



# Technical Data Sheet

Peter Kwasny GmbH, Heilbronner Str. 96  
74831 Gundelsheim / Germany  
Phone: +496269 95-0, Fax: +496269 95-80  
www.spraymax.com / www.kwasny.com / info@kwasny.de

## Auto-K Basic Filler-primer grey 150 ml Art. Nr. 33001



### Product

#### Description / Purpose

The product primes and fills in one operation, is universally applicable and easy to sand. The high solids content causes pores and fine grinding grooves are balanced and it becomes one achieve a closed, smooth surface.

The subsequent sanding with fine sanding paper creates an even surface, which is the prerequisite for the successful Top coat creates.

#### Properties

- Provides a smooth surface
- Guaranteed uniform top coat
- Good adhesion
- High filling capacity
- Very good course
- Fast drying
- Good sandability

#### Material base

nitro combination resins

#### Colour

Grey

#### VOC Value (EU)

83,34 g/l

### Substrate

Steel (cleaned and sanded)  
Pottery, stone, clay, glass, paper and some plastics.  
Here before in an inconspicuous place  
Check compatibility and liability.

## Processing

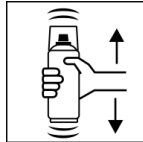
### Protection measures



Wear personal protection equipment.  
(gloves / goggles)

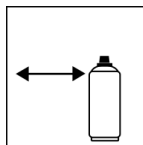
For more information, see safety data sheet.

### Shake



Shake can thoroughly for 2 minutes  
- starting from when the mixing balls are heard.

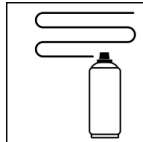
### Spraying distance



15 cm - 25 cm

Hold the can as upright as possible.

### Spray passes

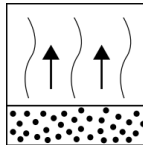


2 spray coats: approx. 50 - 60 µm

Start spraying outside of the Paint surface and wear evenly in Cross several thin coats on.

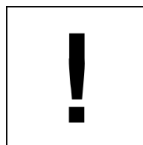
Cross coat means spraying on a first horizontal and then one vertical layer.

### Flash-off time



Flash time: approx. 2 - 3 min between each spray coat. To avoid overspray is for ensure adequate air supply.

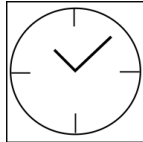
### Processing conditions



Optimum application at 18° C - 25° C.

The substrate must be dry and free of dust and grease.

### Drying



TG1 dust dry: 15 - 20 min

TG2 dry to touch: 60 min.

### Continue

#### Paintwork:

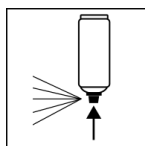
1. Auto-K Anti-corrosion primer
2. Auto-K Filler / primer
3. Top coat

#### After drying:

Recoat with itself, at any time.

With all Auto-K paints, at any time.

## Finish



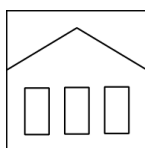
After painting, turn the can upside down and spray the valve empty to prevent the spray valve from sticking.

## Additional Information

### Important Information

Do not spray on synthetic resin painted surfaces, as the paint may pull up.

### Shelf Life



The can is upright, dry and protected from chemical and mechanical influences to be stored and transported between 15 - 25° C.

The safety instructions on the can as well as all legal provisions of the storage location to note.

### Disposal



The completely emptied spray cans must be disposed of in the recycling system. Cans with hardened material must be disposed of as special waste.

### Note

For professional use only.

Identification, see safety data sheet.

The contents in this technical data sheet were created with great care and reflect our current state of knowledge. They provide the user with application-specific information and do not promise certain properties. The information is non-binding and we accept no liability for its integrity, accuracy and completeness. They do not relieve the user of their duty to check the suitability of our product for the intended purpose. The warnings printed on our labels must be respected. Our brands and patents are protected by copyright. All rights reserved We reserve the right to update, amend or supplement the content of the information without prior notice.