

Technical Data Sheet

Peter Kwasny GmbH, Heilbronner Str. 96
74831 Gundelsheim / Germany
Phone: +496269 95-0, Fax: +496269 95-80
www.spraymax.com / www.kwasny.com / info@kwasny.de

belton® Special
Liquid chrome effect paint
150 ml
Art. Nr. 329200



Product

Description / Area of use

The stylish and elegant liquid chrome effect is created in a 2-layer structure: Liquid Chrome base coat black + Liquid Chrome effect coat. The high proportion of metal particles ensures this great effect. belton Liquid Chrome is abrasion-resistant and makes a permanently shiny impression, whatever you design or want to process.

Product benefits

- Special liquid chrome look
- Noble, metallic chrome-silver effect
- High percentage of specific metal particles
- Very good leveling and fast drying
- High abrasion resistance
- Special effect on everyday objects
- In the two-layer structure (Step 1 - 2) the Liquid Chrome effect achieved
- Do not paint over with clear lacquer!
- Please consider information on spray application and paint structure note

Material base

Special acrylic resin

Colour

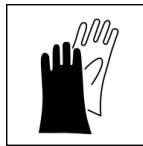
Liquid Chrom

Substrate

Metal, wood, stone, clay, ceramics, glass, plastic and much more.

Processing

Protection measures

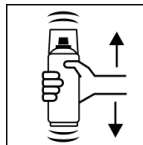


Wear personal protection equipment.

(gloves / goggles)

For more information, see safety data sheet.

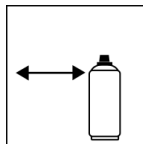
Shake



Shake can thoroughly for 2 minutes

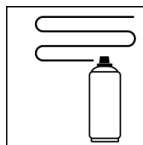
- starting from when the mixing balls are heard.

Spraying distance



15 cm - 25 cm

Spray passes



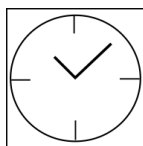
with 3 - 4 cross coats: approx. 30 - 40 µm

Processing conditions



The surface to be painted must be clean, dry and free of grease.

Drying



dust dry: after approx. 20 min

dry to touch: after approx. 60 min

fully cured: after approx. 24 hours

(painting object completely dried)

Painting structure

Paintwork:

1. belton primer

(specific primers depending on the substrate)

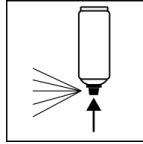
2. Base coat is applied in 2 - 3 cross coats covered with lacquer on the object.

3. Liquid Chrome is applied in 3 - 4 thin coats painted the dry base coat.

4. NO clear coat

Recoatable with itself at any time

Finish



After painting, turn the can upside down and spray the valve until empty.

Additional Information

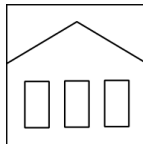
Please note

The liquid chrome effect can only be achieved through the Pre-painting with the belton special base paint black Art. no. 329 001.

(Pay attention to paint structure 2 - 3)

Do not spray on synthetic resin painted surfaces the paint can possibly pull up. Plastic parts (e.g. polypropylene, polyethylene) are coated with belton basic plastic primer (Art. no. 323 505) to prime. Must **NOT** be painted over with clear lacquer, otherwise the special chrome effect will be lost.

Shelf Life



The can is upright, dry and protected from chemical and mechanical influences to be stored and transported between 15 - 25° C.

The safety instructions on the can as well as all legal provisions of the storage location to note.

Disposal



The completely emptied spray cans must be disposed of in the recycling system. Cans with hardened material must be disposed of as special waste.

Note

For professional use only.
Identification, see safety data sheet.

The contents in this technical data sheet were created with great care and reflect our current state of knowledge. They provide the user with application-specific information and do not promise certain properties. The information is non-binding and we accept no liability for its integrity, accuracy and completeness. They do not relieve the user of their duty to check the suitability of our product for the intended purpose. The warnings printed on our labels must be respected. Our brands and patents are protected by copyright. All rights reserved We reserve the right to update, amend or supplement the content of the information without prior notice.