

## Technical Data Sheet

Peter Kwasny GmbH, Heilbronner Str. 96  
74831 Gundelsheim / Germany  
Phone: +496269 95-0, Fax: +496269 95-80  
www.spraymax.com / www.kwasny.com / info@kwasny.de

**belton® Special**  
**Liquid chrome base coat**  
**150 ml**  
**Art. Nr. 329001**



### Product

#### Description / Area of use

The Liquid Chrome base coat must be black be pre-painted to achieve the unique liquid chrome look. Please note the information on paintwork and spray application! The spray paint with a liquid chrome look, which is achieved in a two-layer structure, looks stylish and classy. This is ensured by the high proportion of metal particles. belton special Liquid Chrome is abrasion-resistant and therefore makes a lasting shiny impression, whatever you want to design or process with a high-quality metal look.

#### Product benefits

- Very good leveling and fast drying
- High abrasion resistance
- Special effect on everyday objects
- In the two-layer structure (Step 1 - 2) the Liquid Chrome effect achieved
- Do not paint over with clear lacquer!

#### Material base

Special acrylic resin

#### Colour

Black

### Substrate

Metal, wood, stone, clay, ceramics, glass, plastic and much more.

## Processing

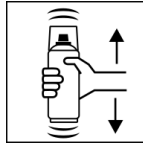
### Protection measures



Wear personal protection equipment.  
(gloves / goggles)

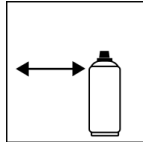
For more information, see safety data sheet.

### Shake



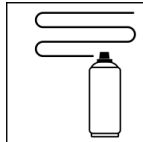
Shake can thoroughly for 2 minutes  
- starting from when the mixing balls are heard.

### Spraying distance



15 cm - 25 cm

### Spray passes



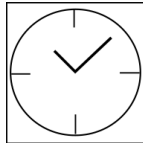
with 2 - 3 cross coats: approx. 40 - 50 µm

### Processing conditions



The surface to be painted must be clean, dry and free of grease.

### Drying



approx. 20 min.  
(until overcoating with Liquid Chrome)

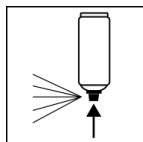
### Painting structure

#### Paintwork:

1. belton primer  
(specific primers depending on the substrate)
2. Base coat is applied in 2 - 3 cross coats covered with lacquer on the object.
3. Liquid Chrome is applied in 3 - 4 thin coats painted the dry base coat.
4. NO clear coat

Recoatable with itself at any time

### Finish



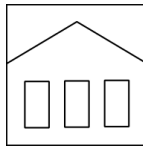
After painting, turn the can upside down and spray the valve until empty.

## Additional Information

### Please note

The liquid chrome effect can only be achieved through the Overpainting with the belton special liquid chrome Effect paint (Art. No. 329 200) can be Achieved (Pay attention to paint structure 2 - 3) Do not spray on synthetic resin painted surfaces the paint can possibly pull up. Plastic parts (e.g. polypropylene, polyethylene) are coated with belton basic plastic primer (Art. no. 323 505) to prime. Must NOT be painted over with clear lacquer, otherwise the special chrome effect will be lost.

### Shelf Life



The can is upright, dry and protected from chemical and mechanical influences to be stored and transported between 15 - 25° C.

The safety instructions on the can as well as all legal provisions of the storage location to note.

### Disposal



The completely emptied spray cans must be disposed of in the recycling system. Cans with hardened material must be disposed of as special waste.

### Note

For professional use only.  
Identification, see safety data sheet.

The contents in this technical data sheet were created with great care and reflect our current state of knowledge. They provide the user with application-specific information and do not promise certain properties. The information is non-binding and we accept no liability for its integrity, accuracy and completeness. They do not relieve the user of their duty to check the suitability of our product for the intended purpose. The warnings printed on our labels must be respected. Our brands and patents are protected by copyright. All rights reserved We reserve the right to update, amend or supplement the content of the information without prior notice.