

Technical Data Sheet

Peter Kwasny GmbH, Heilbronner Str. 96
74831 Gundelsheim / Germany
Phone: +496269 95-0, Fax: +496269 95-80
www.spraymax.com / www.kwasny.com / info@kwasny.de

belton® Special
Transparent spray blue
150 ml
Art. Nr. 326101



Product

Description / Area of use

Glazing special spray for the colored design of objects whose transparency and surface structure should be retained. Ideal for decorative objects made of glass, for lamps, Lanterns or transparent plastics. Inside- and outside can be used.

Product benefits

- Colour-transparent lacquer effect
- Transparency and surface structure are preserved
- Very good flow and easy processing
- Fast drying and high yield
- Weather-resistant, for inside and outside

Material base

Nitro combination resins

Substrate

Glass, plastic

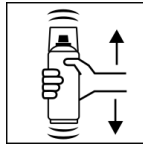
Processing

Protection measures



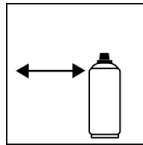
Wear personal protection equipment.
(gloves / goggles)
For more information, see safety data sheet.

Shake



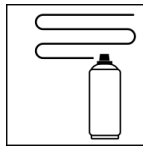
Shake can thoroughly for 2 minutes
- starting from when the mixing balls are heard.

Spraying distance



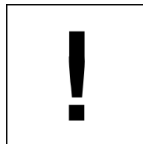
15 cm - 25 cm

Spray passes



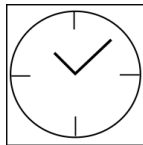
with 3 - 4 cross coats: approx. 20 - 40 µm
(per cross coat 5 - 10 µm)

Processing conditions



The surface to be painted must be clean, dry and free of grease. When painting plastics, please check compatibility beforehand.

Drying

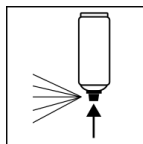


dust dry: approx. 20 min
dry to touch: after approx. 60 min
fully cured: approx. 12 hours

Painting structure

Recoatable with itself and everyone else
belton paints at any time.

Finish



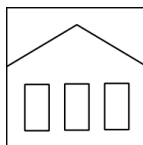
After painting, turn the can upside down and spray the valve until empty.

Additional Information

Please note

Not permitted for car parts according to STVZO!
Glazing, i.e. in several thin layers paint.
Check plastics for their compatibility.

Shelf Life



The can is upright, dry and protected from chemical and mechanical influences to be stored and transported between 15 - 25° C.
The safety instructions on the can as well as all legal provisions of the storage location to note.

Disposal



The completely emptied spray cans must be disposed of in the recycling system. Cans with hardened material must be disposed of as special waste.

Note

For professional use only.
Identification, see safety data sheet.

The contents in this technical data sheet were created with great care and reflect our current state of knowledge. They provide the user with application-specific information and do not promise certain properties. The information is non-binding and we accept no liability for its integrity, accuracy and completeness. They do not relieve the user of their duty to check the suitability of our product for the intended purpose. The warnings printed on our labels must be respected. Our brands and patents are protected by copyright. All rights reserved We reserve the right to update, amend or supplement the content of the information without prior notice.