

Technical Data Sheet

Peter Kwasny GmbH, Heilbronner Str. 96
74831 Gundelsheim / Germany
Phone: +496269 95-0, Fax: +496269 95-80
www.spraymax.com / www.kwasny.com / info@kwasny.de

belton® Special
Pearl-effect pistachio green
150 ml
Art. Nr. 326067



Product

Description / Area of use

For decorative paint finishes with a silky shimmering pearl effect. Decorative and household objects shine in a new look. This velvety, shimmering shine gives everyday objects a touch of luxury.

Product benefits

- Unique pearl effect
- Velvety, silky shimmering shine
- Good hiding power and fast drying
- Very good flow and easy processing
- Weather resistant
- Ideal for everyday household and hobby items
- Can be used indoors and outdoors

Material base

Acrylic resins

Substrate

Metal, wood, plastic, styrofoam, stone, ceramics, clay, glass such as rattan/raffia and cardboard/paper etc.

Processing

Protection measures



Wear personal protection equipment.
(gloves / goggles)
For more information, see safety data sheet.

Shake



Shake can thoroughly for 2 minutes
- starting from when the mixing balls are heard.

Spraying distance



15 cm - 25 cm

Spray passes



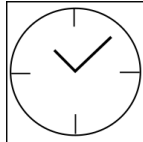
with 2 - 3 cross coats: approx. 40 - 50 µm

Processing conditions



The surface to be painted must be clean, dry and free of grease. Do not spray on synthetic resin painted surface, as the paint may pull up.

Drying



dust dry: after approx. 20 min
dry to touch: after approx. 60 min
fully cured: after approx. 12 hours

Painting structure

Paintwork metal:

1. belton basic anti-rust primer (outside)
2. belton basic universal primer
3. belton special Pearl-effect
4. belton clear coat for all effects

Wood:

1. belton basic wood primer
2. belton special Pearl-effect
3. belton clear coat for all effects

Plastic:

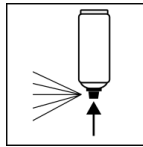
1. belton basic plastic primer
2. belton special Parl-effect
3. belton clear coat for all effects

Styrofoam:

1. belton basic styrofoam primer
2. belton special Pearl-effect
3. belton clear coat for all effects

Recoatable with itself at any time, with all belton paints at any time.

Finish



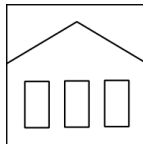
After finishing the painting process can turn around and spray the valve empty.

Additional Information

Please note

With belton clear coat for all effects (Art no. 323 399) overcoat, to achieve the pearl effect and to ensure long-term protection of the paintwork guarantee. Please check plastic substrates for compatibility. All other substrates such as stone, clay, ceramics, glass, rattan/raffia, cardboard/paper should be primed with the belton universal primer.

Shelf Life



The can is upright, dry and protected from chemical and mechanical influences to be stored and transported between 15 - 25° C.

The safety instructions on the can as well as all legal provisions of the storage location to note.

Disposal



The completely emptied spray cans must be disposed of in the recycling system. Cans with hardened material must be disposed of as special waste.

Note

Before use, the safety instructions must always be read carefully and observed.

The contents in this technical data sheet were created with great care and reflect our current state of knowledge. They provide the user with application-specific information and do not promise certain properties. The information is non-binding and we accept no liability for its integrity, accuracy and completeness. They do not relieve the user of their duty to check the suitability of our product for the intended purpose. The warnings printed on our labels must be respected. Our brands and patents are protected by copyright. All rights reserved We reserve the right to update, amend or supplement the content of the information without prior notice.