

## Technical Data Sheet

Peter Kwasny GmbH, Heilbronner Str. 96  
74831 Gundelsheim / Germany  
Phone: +496269 95-0, Fax: +496269 95-80  
www.spraymax.com / www.kwasny.com / info@kwasny.de

**belton® Special**  
**Bronze lacquer antique gold**  
**150 ml**  
**Art. Nr. 326027**



### Product

#### Description / Area of use

Decorative spray paint for handicrafts and decoration, especially in the living area. Gives smooth Surfaces a unique, creative antique look. Can be used inside and outside.

Weather and abrasion resistant.

#### Product benefits

- Stylish antique bronze effect
- Metallic shine effect
- High hiding power and fast drying
- Very good flow and easy processing
- Very productive
- Weather-resistant, for inside and outside
- Ideal for decorative items such as decorated picture frames etc.

Recommendation: Paint over with belton clear coat

#### Material base

Nitro combination resins

### Substrate

Metal, wood, plastic, styrofoam, clay, ceramics, glass, stone, as well as rattan/raffia and cardboard/paper etc.

## Processing

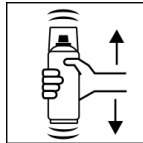
### Protection measures



Wear personal protection equipment.  
(gloves / goggles)

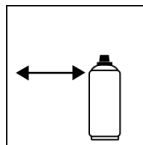
For more information, see safety data sheet.

### Shake



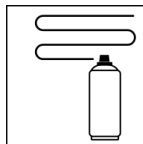
Shake can thoroughly for 2 minutes  
- starting from when the mixing balls are heard.

### Spraying distance



15 cm - 25 cm

### Spray passes



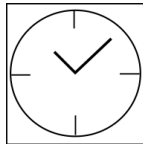
with 2 - 3 spray coats: approx. 40 - 50 µm

### Processing conditions



The surface to be painted must be clean, dry and  
free of grease.

### Drying



dust dry: after approx. 20 min

dry to touch: after approx. 60 min

fully cured: after approx. 12 hours

### Painting structure

#### Paintwork metal:

1. belton basic anti-rust primer (outside)
2. belton basic universal primer
3. belton special Bronze lacquer
4. belton clear coat for all effects (optional)

#### Wood:

1. belton basic wood primer
2. belton special Bronze lacquer
3. belton clear coat for all effects (optional)

#### Plastic:

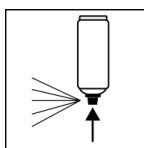
1. belton basic plastic primer
2. belton special Bronze lacquer
3. belton clear coat for all effects (optional)

## Styrofoam:

1. belton basic styrofoam primer
2. belton special Bronze lacque
3. belton clear coat for all effects (optional)

Recoatable with itself at any time. After drying at any time with all belton paints and clear coat.

## **Finish**



After finishing the painting process can turn around and spray the valve empty.

## **Additional Information**

### **Please note**

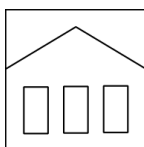
Paint over with belton clear coat for all effects (Art. no. 323 399).

Please check plastic substrates for compatibility.

All other substrates such as stone, clay, ceramics, glass, rattan/bast, cardboard/paper should be primed with the belton universal primer.

Do not spray on synthetic resin painted surfaces, as the paint may pull up.

## **Shelf Life**



The can is upright, dry and protected from chemical and mechanical influences to be stored and transported between 15 - 25° C.

The safety instructions on the can as well as all legal provisions of the storage location to note.

## **Disposal**



The completely emptied spray cans must be disposed of in the recycling system. Cans with hardened material must be disposed of as special waste.

## **Note**

Before use, the safety instructions must always be read carefully and observed.

The contents in this technical data sheet were created with great care and reflect our current state of knowledge. They provide the user with application-specific information and do not promise certain properties. The information is non-binding and we accept no liability for its integrity, accuracy and completeness. They do not relieve the user of their duty to check the suitability of our product for the intended purpose. The warnings printed on our labels must be respected. Our brands and patents are protected by copyright. All rights reserved We reserve the right to update, amend or supplement the content of the information without prior notice.