

Technical Data Sheet

Peter Kwasny GmbH, Heilbronner Str. 96
74831 Gundelsheim / Germany
Phone: +496269 95-0, Fax: +496269 95-80
www.spraymax.com / www.kwasny.com / info@kwasny.de

belton® Special

Gold effect

150 ml

Art. Nr. 326021



Product

Description / Area of use

Anything that needs to shine in gold can be conjured up with this effect varnish in no time at all.

On an elegant, shiny metallic gold effect is achieved on smooth surfaces. Especially suitable for indoor use. Not abrasion resistant.

Product benefits

- Deceptively real gold look, shiny metallic
- High hiding power and fast drying
- Very good flow and easy processing
- Very productive
- Particularly suitable for indoor use (not abrasion-resistant)
- Ideal for handicrafts and decorative items, e.g. metal watering cans etc.
- Do not overcoat with clear coat

Note: Cap does not match content exactly

Material base

Acrylic resin

Substrate

Metal, wood, styrofoam, stone, ceramics, clay, glass such as rattan/raffia and cardboard/paper, paintable plastics etc.

Processing

Protection measures



Wear personal protection equipment.
(gloves / goggles)
For more information, see safety data sheet.

Shake



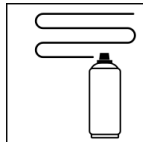
Shake can thoroughly for 2 minutes
- starting from when the mixing balls are heard.

Spraying distance



15 cm - 25 cm

Spray passes



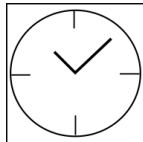
with 1 cross coat: approx. 15 - 20 µm

Processing conditions



The surface to be painted must be clean, dry and
free of grease.

Drying



dust dry: after approx. 20 min
dry to touch: after approx. 60 min
fully cured: after approx. 12 hours

Painting structure

Paintwork metal:

1. belton basic anti-rust primer (outside)
2. belton basic universal primer
3. belton special Gold effect

Wood:

1. belton basic wood primer
2. belton special Gold effect

Plastic:

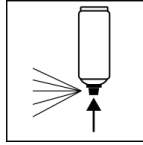
1. belton basic plastic primer
2. belton special Gold effect

Styrofoam:

1. belton basic styrofoam primer
2. belton special Gold effect

Recoatible with itself at any time.

Finish



After finishing the painting process can turn around and spray the valve empty.

Additional Information

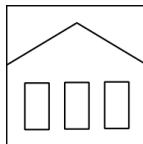
Please note

DO NOT paint over with clear coat, otherwise the special gold effect is lost.

Please check plastic substrates for compatibility.

All other substrates such as stone, clay, ceramics, glass, rattan/raffia, cardboard/paper should be primed with the belton universal primer.

Shelf Life



The can is upright, dry and protected from chemical and mechanical influences to be stored and transported between 15 - 25° C.

The safety instructions on the can as well as all legal provisions of the storage location to note.

Disposal



The completely emptied spray cans must be disposed of in the recycling system. Cans with hardened material must be disposed of as special waste.

Note

Before use, the safety instructions must always be read carefully and observed.

The contents in this technical data sheet were created with great care and reflect our current state of knowledge. They provide the user with application-specific information and do not promise certain properties. The information is non-binding and we accept no liability for its integrity, accuracy and completeness. They do not relieve the user of their duty to check the suitability of our product for the intended purpose. The warnings printed on our labels must be respected. Our brands and patents are protected by copyright. All rights reserved We reserve the right to update, amend or supplement the content of the information without prior notice.