

Technical Data Sheet

Peter Kwasny GmbH, Heilbronner Str. 96
74831 Gundelsheim / Germany
Phone: +496269 95-0, Fax: +496269 95-80
www.spraymax.com / www.kwasny.com / info@kwasny.de

belton® SpectRAL

RAL colour tones

400 ml

Art. Nr. 324XXX for all colours



Product

Description / Area of use

The RAL colours offer a wide range of standardised colour shades that are used in various fields. Whether in furniture making, for object furnishings or for decorative spray painting - with belton spectRAL you can find the right color tone quickly and securely. So you can remove the traces of time easily and with colour accuracy.

The use of belton RAL paint sprays guarantees you exactly reproducible colour shades.

Product benefits

- Large selection of standardized RAL color tones (over 200 RAL colors)
- High hiding power
- Fast drying
- Weather-resistant, for inside and outside
- Simple processing and good flow
- Reproducible color precision in belton quality
- Ideal for do-it-yourselfers, craftsmen and industrialists user

Material base

Nitro combination resins

Gloss level

High gloss, satin gloss, matt

Solid content

17,30

VOC Value (EU)

695 g/l

Substrate

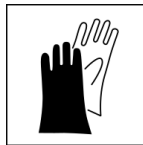
Metal (cleaned, free of dust and grease)

Various plastics (PP, EPDM, ABS, PC, PPO, PA, PVC, PUR, PBT(B), UP-GF). Clean surface with water and detergent. Please check compatibility and adherence on an unobstrusive spot. If necessary, apply plastic adhesion primer.

Styropor, wood, rattan/bast, clay, ceramics, glass, paper, stone (brush off loose particles).

Processing

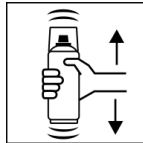
Protection measures



Wear personal protection equipment.
(gloves / goggles)

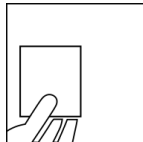
For more information, see safety data sheet.

Shake



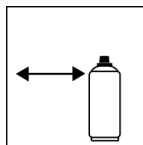
Shake can thoroughly for 2 minutes
- starting from when the mixing balls are heard.

Spray to test



After shaking the can, test spray and check compatibility with the surface and the colour.

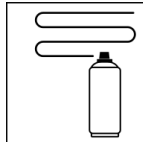
Spraying distance



15 cm - 25 cm

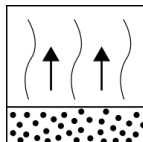
Always hold the can in an upright position.
Start your spraying passes outside of the object.

Spray passes



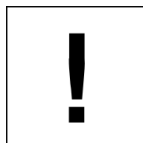
Spray on 2 - 3 thin coats crosswise, first vertically then horizontally: approx. 40 - 50 µm

Flash-off time



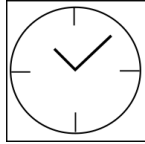
Flash-off time: approx. 5 min. between spray passes.
To avoid spray mist, sufficient fresh air must be provided.

Processing conditions



Depending on the material, the surfaces should be cleaned, derusted, sanded, dry and free of dust and grease. Cover all areas that will not be painted with adhesive tape and/or paper.

Drying



dust dry: approx. 20 min

dry to touch: after approx. 60 min

fully cured: approx. 24 hours

Optimal surrounding temperature for application between 20° and 25° C. Avoid direct sunlight or wind.

Painting structure

Paintwork metal:

1. belton basic anti-corrosion primer (outdoor)
2. belton basic universal primer Art.Nr. 323501
3. belton spectRAL colour tone
4. belton spectRAL clearcoat high gloss or matt

Wood:

1. belton basic wood primer Art.Nr. 323503
2. belton spectRAL colour tone
3. belton spectRAL clearcoat high gloss or matt

Plastic:

1. belton basic plastic adhesion primer Art.Nr. 323505
2. belton spectRAL colour tone
3. belton spectRAL clearcoat high gloss or matt

Polystyrene:

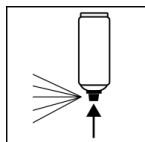
1. belton basic polystyrene primer Art.Nr. 323506
2. belton spectRAL colour tone
3. belton spectRAL clearcoat high gloss or matt

Clay, Ceramic, Glass, Paper, Stone:

1. belton basic universal primer Art.Nr. 323501
2. belton spectRAL colour tone
3. belton spectRAL clearcoat high gloss or matt

After drying, it can be painted over with itself or all belton paints at any time.

Finish



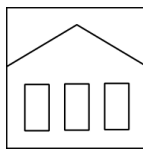
After painting, turn the can upside down and spray the valve until empty.

Additional Information

Please note

Check substrate for compatibility and, if necessary, pre-treat with the appropriate belton Basic primer. Do not subject coated paper to mechanical stress. Do not spray on surfaces painted with synthetic resin color may come off. Substrates must be dry, dust- and fat free.

Shelf Life



The can is upright, dry and protected from chemical and mechanical influences to be stored and transported between 15 - 25° C.

The safety instructions on the can and all legal regulations of the storage location must be observed.

Disposal



The completely emptied spray cans must be disposed of in the recycling system. Cans with hardened material must be disposed of as special waste.

Note

Before use, the safety instructions must always be read carefully and observed.

The contents in this technical data sheet were created with great care and reflect our current state of knowledge. They provide the user with application-specific information and do not promise certain properties. The information is non-binding and we accept no liability for its integrity, accuracy and completeness. They do not relieve the user of their duty to check the suitability of our product for the intended purpose. The warnings printed on our labels must be respected. Our brands and patents are protected by copyright. All rights reserved We reserve the right to update, amend or supplement the content of the information without prior notice.