

## Technical Data Sheet

Peter Kwasny GmbH, Heilbronner Str. 96  
74831 Gundelsheim / Germany  
Phone: +496269 95-0, Fax: +496269 95-80  
www.spraymax.com / www.kwasny.com / info@kwasny.de

**belton® Special**  
**Terracotta-Effect stone white**  
**400 ml**  
**Art. Nr. 323604**



### Product

#### Description / Area of use

For decorative paintwork in the Mediterranean Terracotta effect. Ideal for home and garden, whatever is in be embellished with a Mediterranean terracotta look.  
Also ideal for the modern country house style.

#### Product benefits

- Mediterranean terracotta look
- High hiding power and fast drying
- Easy processing and very good flow
- Very productive
- Weather-resistant, for inside and outside
- Ideal for home and garden

#### Material base

Nitro combination resins

### Substrate

Metal, wood, styrofoam, stone, clay, ceramics, glass as well as rattan/raffia, cardboard/paper, paintable plastics, etc.

## Processing

### Protection measures



Wear personal protection equipment.  
(gloves / goggles)  
For more information, see safety data sheet.

### Shake



Shake can thoroughly for 2 minutes  
- starting from when the mixing balls are heard.

### Spraying distance



15 cm - 25 cm

### Spray passes



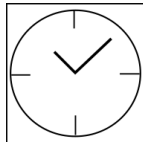
with 2 - 3 cross coats: approx. 40 - 50 µm

### Processing conditions



The surface to be painted must be clean, dry and free of grease. Do not spray on synthetic resin painted surface, as the paint may pull up.

### Drying



dust dry: after approx. 20 min  
dry to touch: after approx. 60 min  
fully cured: after approx. 12 hours

### Painting structure

#### Paintwork metal:

1. belton basic anti-rust primer (outside)
2. belton basic universal primer
3. belton special terracotta-effect

#### Wood:

1. belton basic wood primer
2. belton special terracotta-effect

#### Plastic:

1. belton basic plastic primer
2. belton special terracotta-effect

#### Styrofoam:

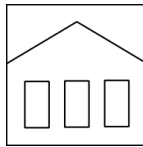
1. belton basic styrofoam primer
  2. belton special terracotta-effect
- Recoat with itself at any time.

## Additional Information

### **Please note**

Please check plastic substrates for compatibility. All other substrates such as stone, clay, ceramics, glass, rattan/bast, cardboard/paper should be primed with the belton universal primer.

### **Shelf Life**



The can is upright, dry and protected from chemical and mechanical influences to be stored and transported between 15 - 25° C.

The safety instructions on the can as well as all legal provisions of the storage location to note.

### **Disposal**



The completely emptied spray cans must be disposed of in the recycling system. Cans with hardened material must be disposed of as special waste.

### **Note**

Before use, the safety instructions must always be read carefully and observed.

The contents in this technical data sheet were created with great care and reflect our current state of knowledge. They provide the user with application-specific information and do not promise certain properties. The information is non-binding and we accept no liability for its integrity, accuracy and completeness. They do not relieve the user of their duty to check the suitability of our product for the intended purpose. The warnings printed on our labels must be respected. Our brands and patents are protected by copyright. All rights reserved We reserve the right to update, amend or supplement the content of the information without prior notice.