

Technical Data Sheet

Peter Kwasny GmbH, Heilbronner Str. 96
74831 Gundelsheim / Germany
Phone: +496269 95-0, Fax: +496269 95-80
www.spraymax.com / www.kwasny.com / info@kwasny.de

belton® Special Terracotta-Effect sahara yellow

400 ml

Art. Nr. 323602



Product

Description / Area of use

For decorative paintwork in the Mediterranean Terracotta effect. Ideal for home and garden, whatever is in be embellished with a Mediterranean terracotta look.
Also ideal for the modern country house style.

Product benefits

- Mediterranean terracotta look
- High hiding power and fast drying
- Easy processing and very good flow
- Very productive
- Weather-resistant, for inside and outside
- Ideal for home and garden

Material base

Nitro combination resins

Substrate

Metal, wood, styrofoam, stone, clay, ceramics, glass as well as rattan/raffia, cardboard/paper, paintable plastics, etc.

Processing

Protection measures



Wear personal protection equipment.
(gloves / goggles)
For more information, see safety data sheet.

Shake



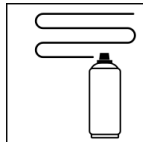
Shake can thoroughly for 2 minutes
- starting from when the mixing balls are heard.

Spraying distance



15 cm - 25 cm

Spray passes



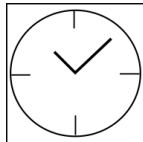
with 2 - 3 cross coats: approx. 40 - 50 µm

Processing conditions



The surface to be painted must be clean, dry and free of grease. Do not spray on synthetic resin painted surface, as the paint may pull up.

Drying



dust dry: after approx. 20 min
dry to touch: after approx. 60 min
fully cured: after approx. 12 hours

Painting structure

Paintwork metal:

1. belton basic anti-rust primer (outside)
2. belton basic universal primer
3. belton special terracotta-effect

Wood:

1. belton basic wood primer
2. belton special terracotta-effect

Plastic:

1. belton basic plastic primer
2. belton special terracotta-effect

Styrofoam:

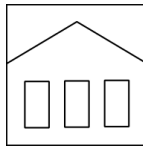
1. belton basic styrofoam primer
 2. belton special terracotta-effect
- Recoat with itself at any time.

Additional Information

Please note

Please check plastic substrates for compatibility. All other substrates such as stone, clay, ceramics, glass, rattan/bast, cardboard/paper should be primed with the belton universal primer.

Shelf Life



The can is upright, dry and protected from chemical and mechanical influences to be stored and transported between 15 - 25° C.

The safety instructions on the can as well as all legal provisions of the storage location to note.

Disposal



The completely emptied spray cans must be disposed of in the recycling system. Cans with hardened material must be disposed of as special waste.

Note

Before use, the safety instructions must always be read carefully and observed.

The contents in this technical data sheet were created with great care and reflect our current state of knowledge. They provide the user with application-specific information and do not promise certain properties. The information is non-binding and we accept no liability for its integrity, accuracy and completeness. They do not relieve the user of their duty to check the suitability of our product for the intended purpose. The warnings printed on our labels must be respected. Our brands and patents are protected by copyright. All rights reserved We reserve the right to update, amend or supplement the content of the information without prior notice.