

Technical Data Sheet

Peter Kwasny GmbH, Heilbronner Str. 96
74831 Gundelsheim / Germany
Phone: +496269 95-0, Fax: +496269 95-80
www.spraymax.com / www.kwasny.com / info@kwasny.de

belton® Basic
Short-term marker signal white
500 ml
Art. Nr. 323580



Product

Description / Area of use

For temporary markings with a durability from 2 - 8 weeks, depending on abrasion and weather influences varied. Ideal for sports events and hobbies. The quick-drying special paint with 360° overhead function can be used indoors and outdoors and is suitable for a wide variety of substrates.

Product benefits

- High opacity and luminosity
- Fluorescent special pigments
- Temporary writing and marking
- Fast drying and good flow
- Flexible spray application with 360° C valve
- Clean working with overhead function
- Special spray cap

Material base

Special binder combination

Substrate

Stone, concrete, asphalt, lawn, sand, wood etc.

Processing

Protection measures

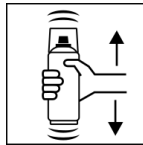


Wear personal protection equipment.

(gloves / goggles)

For more information, see safety data sheet.

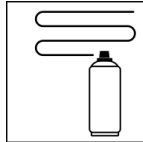
Shake



Shake can thoroughly for 2 minutes

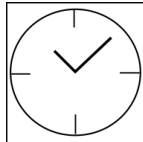
- starting from when the mixing balls are heard.

Spray passes



Flexible 360° C spray application approx. 20 - 25 µm per spray coat

Drying



dust dry: after approx. 20 min

dry to touch: after approx. 90 min

fully cured: after approx. 12 hours

Painting structure

Recoatable with itself at any time and with all belton paints.

Additional Information

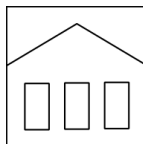
Please note

Durability of the temporary marker:

approx. 2 - 8 weeks, depending on the weather.

Also for vertical surfaces as the paint dries quickly and does not expire.

Shelf Life



The can is upright, dry and protected from chemical and mechanical influences to be stored and transported between 15 - 25° C.

The safety instructions on the can as well as all legal provisions of the storage location to note.

Disposal



The completely emptied spray cans must be disposed of in the recycling system. Cans with hardened material must be disposed of as special waste.

Note

Before use, the safety instructions must always be read carefully and observed.

The contents in this technical data sheet were created with great care and reflect our current state of knowledge. They provide the user with application-specific information and do not promise certain properties. The information is non-binding and we accept no liability for its integrity, accuracy and completeness. They do not relieve the user of their duty to check the suitability of our product for the intended purpose. The warnings printed on our labels must be respected. Our brands and patents are protected by copyright. All rights reserved We reserve the right to update, amend or supplement the content of the information without prior notice.