

Technical Data Sheet

Peter Kwasny GmbH, Heilbronner Str. 96
74831 Gundelsheim / Germany
Phone: +496269 95-0, Fax: +496269 95-80
www.spraymax.com / www.kwasny.com / info@kwasny.de

belton® Basic
Road- and line-markers neon yellow
500 ml
Art. Nr. 323571



Product

Description / Area of use

Quick-drying special paint for exact Line marking on all types of surfaces such as asphalt, concrete, earth, grass, sand, snow. Ideal for marking parking spaces, storage rooms and for private purposes.

For all absorbent and non-absorbent substrates and for vertical surfaces.

Clean overhead work with 360° function.

Product benefits

- First-time user backup
- Spray safety / prevents accidental spraying
- Color coding / on rotating spray guard
- Wider spray pattern / due to optimized valve
- High opacity and luminosity
- Fluorescent special pigments
- Exact line marking possible
- Fast drying and good flow
- Flexible spray application with 360° C valve
- Clean working with overhead function
- Better handling thanks to the special spray cap

Material base

Special binder combination

Substrate

Asphalt, stone, concrete, sand and much more.

Processing

Protection measures

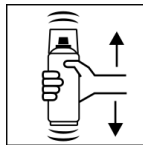


Wear personal protection equipment.

(gloves / goggles)

For more information, see safety data sheet.

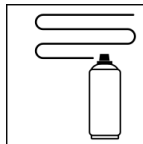
Shake



Shake can thoroughly for 2 minutes

- starting from when the mixing balls are heard.

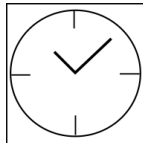
Spray passes



Flexible 360° C spray application (overhead function)

approx. 20 - 25 µm per spray coat

Drying



dust dry: after approx. 20 min

dry to touch: after approx. 90 min

fully cured: after approx. 12 hours

Painting structure

Recoatable with itself at any time and with all belton paints.

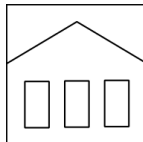
Additional Information

Please note

Good overhead - work possible.

Also for vertical surfaces, as the paint dries quickly and does not run off.

Shelf Life



The can is upright, dry and protected from chemical and mechanical influences to be stored and transported between 15 - 25° C.

The safety instructions on the can as well as all legal provisions of the storage location to note.

Disposal



The completely emptied spray cans must be disposed of in the recycling system. Cans with hardened material must be disposed of as special waste.

Note

Before use, the safety instructions must always be read carefully and observed.

The contents in this technical data sheet were created with great care and reflect our current state of knowledge. They provide the user with application-specific information and do not promise certain properties. The information is non-binding and we accept no liability for its integrity, accuracy and completeness. They do not relieve the user of their duty to check the suitability of our product for the intended purpose. The warnings printed on our labels must be respected. Our brands and patents are protected by copyright. All rights reserved We reserve the right to update, amend or supplement the content of the information without prior notice.