

## Technical Data Sheet

Peter Kwasny GmbH, Heilbronner Str. 96  
74831 Gundelsheim / Germany  
Phone: +496269 95-0, Fax: +496269 95-80  
www.spraymax.com / www.kwasny.com / info@kwasny.de

**belton® Basic**  
**Construction and forestry marker 500 ml**  
**signal green**  
**Art. Nr. 323565**



### Product

#### Description / Area of use

Ideal for writing and marking in the areas of construction, surveying, timber and forestry. Through the lancet is a highly precise and variable spraying possible, also overhead through the 360° Spray nozzle. Optimal for spraying vertical surfaces, as the paint dries quickly and does not expires. For all absorbent and non-absorbent substrates.

#### Product benefits

- High opacity and luminosity
- Fluorescent special pigments
- Precise writing and marking
- Fast drying and good flow
- Flexible spray application with 360° C valve
- Special writing spray head
- Lancet for high-precision work

#### Material base

Special binder combination

### Substrate

Stone, concrete, asphalt, wood etc.

## Processing

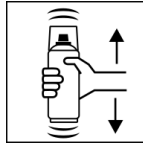
### Protection measures



Wear personal protection equipment.  
(gloves / goggles)

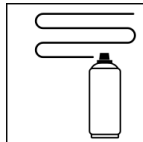
For more information, see safety data sheet.

### Shake



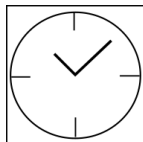
Shake can thoroughly for 2 minutes  
- starting from when the mixing balls are heard.

### Spray passes



Flexible 360° C spray application approx. 20 - 25 µm  
per spray coat

### Drying



dust dry: after approx. 20 min

dry to touch: after approx. 90 min

fully cured: after approx. 12 hours

### Painting structure

Recoatable with itself at any time and with all belton  
paints.

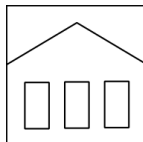
## Additional Information

### Please note

Overhead - work possible.

Also for vertical surfaces, as the paint dries quickly  
and does not expires.

### Shelf Life



The can is upright, dry and protected from chemical  
and mechanical influences to be stored and  
transported between 15 - 25° C.

The safety instructions on the can as well as all legal  
provisions of the storage location to note.

### Disposal



The completely emptied spray cans must be dis-  
posed of in the recycling system. Cans with hardened  
material must be disposed of as special waste.

**Note**

Before use, the safety instructions must always be read carefully and observed.

The contents in this technical data sheet were created with great care and reflect our current state of knowledge. They provide the user with application-specific information and do not promise certain properties. The information is non-binding and we accept no liability for its integrity, accuracy and completeness. They do not relieve the user of their duty to check the suitability of our product for the intended purpose. The warnings printed on our labels must be respected. Our brands and patents are protected by copyright. All rights reserved We reserve the right to update, amend or supplement the content of the information without prior notice.