

Technical Data Sheet

Peter Kwasny GmbH, Heilbronner Str. 96
74831 Gundelsheim / Germany
Phone: +496269 95-0, Fax: +496269 95-80
www.spraymax.com / www.kwasny.com / info@kwasny.de

belton® Special
Rose gold effect
400 ml
Art. Nr. 323496



Product

Description / Area of use

High-quality effect paint to achieve a decorative rose gold effect on many different surfaces and objects.
The elegant rose gold effect gives the lacquered Ones Items a high quality and luxurious appearance.

Product benefits

- Trendy, elegant rose gold effect
- Outstanding adhesion, very good flow
- High opacity, fast drying
- Optional with Belton clearcoat for all effects (Art. no. 323 399).

Material base

Acrylic paint

Colour

Rose

Substrate

Metals, wood, plastic, cardboard, stone, glass and ceramics.

Non-ferrous metals, galvanized steel, styrofoam and some plastics are with the respective Pre-treat Belton special primers.

Processing

Protection measures



Wear personal protection equipment.
(gloves / goggles)
For more information, see safety data sheet.

Shake



Shake can thoroughly for 2 minutes
- starting from when the mixing balls are heard.

Spraying distance



15 cm - 25 cm

Spray passes



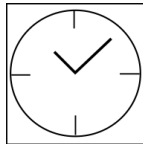
with 2 - 3 spray coats

Processing conditions



The surface to be painted must be clean, dry and
free of grease.

Drying



dust dry: after approx. 10 min
dry to touch: after approx. 15 - 20 min
fully cured: after approx. 12 hours

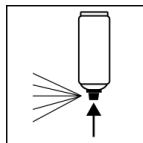
Painting structure

The rose gold effect paint is for inside and can be
used outside.

Recommendation:

With Belton clear coat for all effects (Art. no. 323 399)
overcoat to protect against UV and weather to
increase resistance!

Finish



After finishing the painting process can turn around
and spray the valve empty.

Additional Information

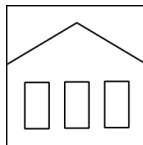
Please note

Suitable for inside and outside!
Please check the compatibility of plastic substrates.

All other substrates such as ceramics or clay are too with the Belton Universal Primer prime!

Do not spray on synthetic resin painted surfaces, as the paint may pull up. The surface to be painted must be clean, dry and free of grease.

Shelf Life



The can is upright, dry and protected from chemical and mechanical influences to be stored and transported between 15 - 25° C.

The safety instructions on the can as well as all legal provisions of the storage location to note.

Disposal



The completely emptied spray cans must be disposed of in the recycling system. Cans with hardened material must be disposed of as special waste.

Note

Before use, the safety instructions must always be read carefully and observed.

The contents in this technical data sheet were created with great care and reflect our current state of knowledge. They provide the user with application-specific information and do not promise certain properties. The information is non-binding and we accept no liability for its integrity, accuracy and completeness. They do not relieve the user of their duty to check the suitability of our product for the intended purpose. The warnings printed on our labels must be respected. Our brands and patents are protected by copyright. All rights reserved We reserve the right to update, amend or supplement the content of the information without prior notice.