

Technical Data Sheet

Peter Kwasny GmbH, Heilbronner Str. 96
74831 Gundelsheim / Germany
Phone: +496269 95-0, Fax: +496269 95-80
www.spraymax.com / www.kwasny.com / info@kwasny.de

belton® Special

Rust effect

400ml

Art. Nr. 323495



Product

Description / Area of use

High-quality, quick-drying rust effect spray, to achieve a rough, rusty surface structure. For metals, wood, ceramics, stone and others substrates. A trendy, uniquely genuine rust effect.

Product benefits

- Unique rust look
- For a rough, rusty looking surface structure
- High opacity and good adhesion
- Fast drying and quick processing
- Ideal for DIY, decoration and crafts
- Can be painted over with 1K top coats (color)
- For indoor and outdoor
- Weather, scratch and impact resistant.
- Can be painted over if necessary.

Material base

Nitro combination resins

Substrate

Metal, wood, stone, clay, ceramics, glass as well cardboard/paper. When using appropriate Special primers also for plastic and Styrofoam suitable.

Processing

Protection measures

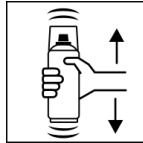


Wear personal protection equipment.

(gloves / goggles)

For more information, see safety data sheet.

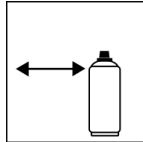
Shake



Shake can thoroughly for 2 minutes

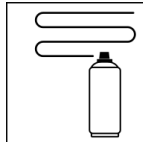
- starting from when the mixing balls are heard.

Spraying distance



15 cm - 25 cm

Spray passes



Without pre-painting (with orange):

2 - 3 spray coats in thin coats: approx. 40 - 50 µm

Pre-painting (with orange):

Orange in rich, even layers Instruct. Then the belton rust effect in Apply 2 - 3 spray coats in thin coats into the wet undercoat.

Processing conditions

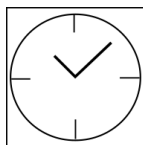


Surfaces must be smooth, clean, dry and be fat free.

If necessary, sand uneven surfaces.

A pre-paint in orange (our recommendation belton spectRAL, Art. no. 324032) enhances the rust effect.

Drying



dust dry: after approx. 10 min

dry to touch: after approx. 15 - 20 min

fully cured: after approx. 12 hours

Painting structure

Paintwork metal:

1. belton basic universal primer (optional)
2. Pre-painting in orange (recommendation)
belton spectral orange, Art. no. 324032 (option)
3. belton special rust effect
4. Can be painted over with 1K top coat, shade,
(optional)

Wood:

1. belton basic wood primer (optional)
2. Pre-painting in orange (recommendation)
belton spectral orange, Art. no. 324032 (option)
3. belton special rust effect
4. Can be painted over with 1K top coat, shade,
(optional)

Plastic:

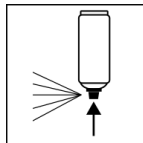
1. belton basic plastic primer (optional)
2. Pre-painting in orange (recommendation)
belton spectral orange, Art. no. 324032 (option)
3. belton special rust effect
4. Can be painted over with 1K top coat, shade,
(optional)

Styrofoam:

1. belton basic styrofoam primer (optional)
2. Pre-painting in orange (recommendation)
belton spectral orange, Art. no. 324032 (option)
3. belton special rust effect
4. Can be painted over with 1K top coat, shade,
(optional)

Recoat with itself at any time, with 1K top coat (color) after 12 hours drying.

Finish



After finishing the painting process can turn around and spray the valve empty.

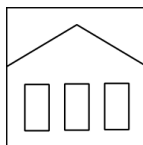
Additional Information

Please note

Please check plastic substrates for compatibility. All other substrates such as stone, clay, ceramics, glass, rattan/bast, cardboard/paper should be primed with the belton universal primer.

Do not spray on synthetic resin painted surfaces, as the paint may pull up.

Shelf Life



The can is upright, dry and protected from chemical and mechanical influences to be stored and transported between 15 - 25° C.

The safety instructions on the can as well as all legal provisions of the storage location to note.

Disposal



The completely emptied spray cans must be disposed of in the recycling system. Cans with hardened material must be disposed of as special waste.

Note

Before use, the safety instructions must always be read carefully and observed.

The contents in this technical data sheet were created with great care and reflect our current state of knowledge. They provide the user with application-specific information and do not promise certain properties. The information is non-binding and we accept no liability for its integrity, accuracy and completeness. They do not relieve the user of their duty to check the suitability of our product for the intended purpose. The warnings printed on our labels must be respected. Our brands and patents are protected by copyright. All rights reserved We reserve the right to update, amend or supplement the content of the information without prior notice.