

Technical Data Sheet

Peter Kwasny GmbH, Heilbronner Str. 96
74831 Gundelsheim / Germany
Phone: +496269 95-0, Fax: +496269 95-80
www.spraymax.com / www.kwasny.com / info@kwasny.de

belton® Special
Grill paint spray
400 ml
Art. Nr. 323460



Product

Description / Area of use

For the optical and functional enhancement of Objects subjected to high temperatures and objects, such as grills, cast-iron ovens and Boilers exposed to extreme heat or corrosion. The special paint spray has a high surface hardness and is up to 650° C heat resistant.

Product benefits

- Functional upgrade and long-term protection
- Tough and high surface hardness
- Good hiding power and fast drying
- Very good flow and easy processing
- Weather-resistant, for inside and outside
- Heat resistant up to 650° C
- Heat up slowly, as the paint only has a temperature of 250° C hardens

Note: Not suitable for the grill grate

Material base

Silicone resins

Colour

Black matt

Substrate

Iron, steel, metals etc.

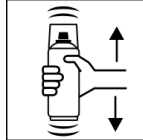
Processing

Protection measures



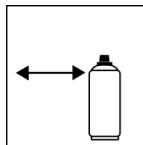
Wear personal protection equipment.
(gloves / goggles)
For more information, see safety data sheet.

Shake



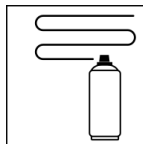
Shake can thoroughly for 2 minutes
- starting from when the mixing balls are heard.

Spraying distance



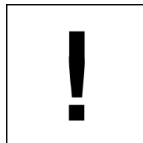
15 cm - 25 cm

Spray passes



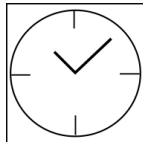
with 3 - 4 cross coats: approx. 30 - 40 µm
(apply several thin layers, with max. 30 µm per coat)

Processing conditions



The surface to be painted must be clean, dry and
free of grease.

Drying

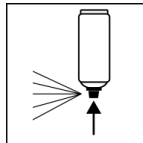


dust dry: after approx. 30 min
dry to touch: after approx. 60 min
fully cured: Warm up slowly.
Paint only hardens at temperatures above +250° C.

Painting structure

Recoat with itself at any time.

Finish



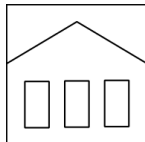
After finishing the painting process can turn around
and spray the valve empty.

Additional Information

Please note

Do not use a primer as this does not is temperature
resistant. Paint only hardens at 250° C.
Warm up slowly. Do not spray on synthetic resin
painted surfaces, as the paint may pull up.
Only paint on cold objects.
Note: Not suitable for the grill grate.

Shelf Life



The can is upright, dry and protected from chemical and mechanical influences to be stored and transported between 15 - 25° C.

The safety instructions on the can as well as all legal provisions of the storage location to note.

Disposal



The completely emptied spray cans must be disposed of in the recycling system. Cans with hardened material must be disposed of as special waste.

Note

Before use, the safety instructions must always be read carefully and observed.

The contents in this technical data sheet were created with great care and reflect our current state of knowledge. They provide the user with application-specific information and do not promise certain properties. The information is non-binding and we accept no liability for its integrity, accuracy and completeness. They do not relieve the user of their duty to check the suitability of our product for the intended purpose. The warnings printed on our labels must be respected. Our brands and patents are protected by copyright. All rights reserved We reserve the right to update, amend or supplement the content of the information without prior notice.