

## Technical Data Sheet

Peter Kwasny GmbH, Heilbronner Str. 96  
74831 Gundelsheim / Germany  
Phone: +496269 95-0, Fax: +496269 95-80  
www.spraymax.com / www.kwasny.com / info@kwasny.de

**belton® Special**  
**Granite-Effect granite-white**  
**400 ml**  
**Art. Nr. 323359**



### Product

#### Description / Area of use

This special spray gives decorative items of all kinds a stone-typical, massive and noble granite effect. An amazing transformation, in particular of stone-atypical objects how Flower pots, garden figures or decorative balls, for inside and outside.

#### Product benefits

- Massive granite effect in stone design (like real)
- Transformation of non-stone objects
- High hiding power and fast drying
- Easy processing and very good flow
- Very economical and water-based
- For inside and outside (limited weather resistance)
- Ideal for non-stone objects

#### Material base

Special resins

#### Colour

Grey

### Substrate

metal, wood, styrofoam, stone, ceramics, clay, glass such as rattan/raffia and cardboard/paper, paintable plastics etc.

## Processing

### Protection measures



Wear personal protection equipment.  
(gloves / goggles)  
For more information, see safety data sheet.

### Shake



Shake can thoroughly for 10 seconds.

### Spraying distance



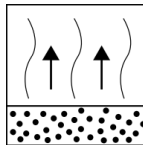
40 cm - 50 cm

### Spray passes



with 1 - 2 cross coats: approx. 50 - 100 µm

### Flash-off time



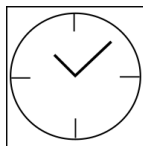
Between the spray passes: approx. 15 min.

### Processing conditions



The surface to be painted must be clean, dry and free of grease. Do not spray on synthetic resin painted surfaces, as the paint may pull up.

### Drying



dust dry: after approx. 3 hours  
dry to touch: after approx. 6 hours  
fully cured: after approx. 48 hours

### Painting structure

#### Paintwork

##### Metal:

1. belton basic anti-rust primer (outside)
2. belton basic universal primer
3. belton special Granite-Effect
4. belton clear coat for all effects

##### Wood:

1. belton basic wood primer
2. belton special Granite-Effect
3. belton clear coat for all effects

## Plastic:

1. belton basic plastic primer
2. belton special Granite-Effect
3. belton clear coat for all effects

## Styrofoam (only for inside):

1. belton basic styrofoam primer
2. belton special Granite-Effect
3. NOT clear coat

Recoatable with itself at any time. With clear coat for all effect paints after approx. 6 hours.

## Finish



After finishing the painting process can turn around and spray the valve empty.

## Additional Information

### Please note

### Recommendation:

Between spray coats and longer ones Break the paint off with a damp cloth wipe spray head, to glue the avoid spray head.

Definitely with belton clear coat for all effects (Art. No. 323 399) to achieve the granite effect to seal in the long term.

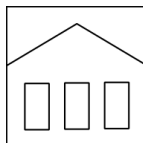
Use only in protected outdoor areas recommended.

In the case of long-term weathering, the paint layer can be infiltrated by water and the paint will peel off.

Please check plastic substrates for compatibility.

All other substrates such as stone, clay, ceramics, glass, rattan/raffia, cardboard/paper should be primed with the belton universal primer.

## Shelf Life



The can is upright, dry and protected from chemical and mechanical influences to be stored and transported between 15 - 25° C.

The safety instructions on the can as well as all legal provisions of the storage location to note.

## Disposal



The completely emptied spray cans must be disposed of in the recycling system. Cans with hardened material must be disposed of as special waste.

## Note

Before use, the safety instructions must always be read carefully and observed.

The contents in this technical data sheet were created with great care and reflect our current state of knowledge. They provide the user with application-specific information and do not promise certain properties. The information is non-binding and we accept no liability for its integrity, accuracy and completeness. They do not relieve the user of their duty to check the suitability of our product for the intended purpose. The warnings printed on our labels must be respected. Our brands and patents are protected by copyright. All rights reserved We reserve the right to update, amend or supplement the content of the information without prior notice.