

Technical Data Sheet

Peter Kwasny GmbH, Heilbronner Str. 96
74831 Gundelsheim / Germany
Phone: +496269 95-0, Fax: +496269 95-80
www.spraymax.com / www.kwasny.com / info@kwasny.de

belton® Special
Metallic paint gold
400 ml
Art. No. 323055



Product

Description / Area of use

To achieve unique metallic effects, that change the character of the painted objects and give them a valuable and solid impression.

Decorative effect paint for inside and outside with excellent weather resistance.

Product benefits

- Shiny metallic effects
- Valuable appearance of the painted objects
- High hiding power and fast drying
- Very good levelling and easy processing
- Weather-resistant, for inside and outside
- Very productive
- Ideal for home, hobby, workshop, e.g. mailboxes, newspaper tubes etc.

Recommendation: Paint over with belton clear coat

Material base

Nitro combination resins

Substrate

metal, wood, plastic, styrofoam, stone, ceramics, clay, glass such as rattan/raffia and cardboard/paper etc.

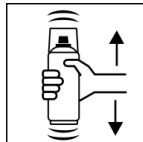
Processing

Protection measures



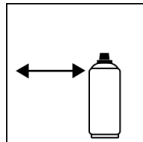
Wear personal protection equipment.
(gloves / goggles)
For more information, see safety data sheet.

Shake



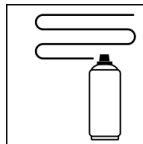
Shake can thoroughly for 2 minutes
- starting from when the mixing balls are heard.

Spraying distance



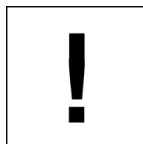
15 cm - 25 cm

Spray passes



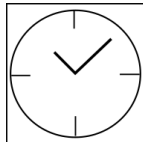
with 2 - 3 cross coats: approx. 40 - 50 µm

Processing conditions



The surface to be painted must be clean, dry and free of grease.

Drying



dust dry: after approx. 20 min
dry to touch: after approx. 60 min
fully cured: after approx. 12 hours

Painting structure

Paintwork metal:

1. belton basic anti-rust primer (outside)
2. belton basic universal primer
3. belton special metallic paint
4. belton clear coat for all effects

Wood:

1. belton basic wood primer
2. belton special metallic paint
3. belton clear coat for all effects

Plastic:

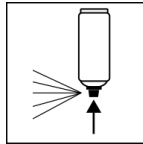
1. belton basic plastic primer
2. belton special metallic paint
3. belton clear coat for all effects

Styrofoam:

1. belton basic styrofoam primer
2. belton special metallic paint
3. belton clear coat for all effects

Recoatible with itself at any time. After drying at any time with all belton paints and clear coat.

Finish



After painting, turn the can upside down and spray for 3 - 5 seconds to clean the valve.

Additional Information

Please note



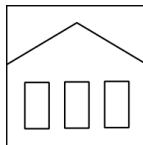
Avoid shocks, friction and impacts.

Recommendation:

With belton clear coat for all effects (Art no. 323 399) overcoat. Please check plastic substrates for compatibility. All other substrates such as stone, clay, ceramics, glass, rattan/raffia, cardboard/paper should be primed with the belton universal primer.

Do not spray on synthetic resin painted surfaces, as the paint may pull up.

Shelf Life



The can must be stored and transported in an upright position between 15 - 25° C and a relative humidity of not more than 60% in a dry place where it is protected against chemical and mechanical influences. The safety instructions on the can as well as all legal provisions of the storage location have to be noted.

Disposal



The completely emptied spray cans must be disposed of in the recycling system. Cans with hardened material must be disposed of as special waste.

Note

Before use, the safety instructions must always be read carefully and observed.

The contents in this technical data sheet were created with great care and reflect our current state of knowledge. They provide the user with application-specific information and do not promise certain properties. The information is non-binding and we accept no liability for its integrity, accuracy and completeness. They do not relieve the user of their duty to check the suitability of our product for the intended purpose. The warnings printed on our labels must be respected. Our brands and patents are protected by copyright. All rights reserved We reserve the right to update, amend or supplement the content of the information without prior notice.