

Technical Data Sheet

Peter Kwasny GmbH, Heilbronner Str. 96
74831 Gundelsheim / Germany
Phone: +496269 95-0, Fax: +496269 95-80
www.spraymax.com / www.kwasny.com / info@kwasny.de

belton® Special Hammerblow paint gold

400 ml

Art. Nr. 323002



Product

Description / Area of use

Weather-resistant and of high quality, this spray paint impresses with its typical hammerblow look. Can be used on a wide variety of materials.

For redesigning or touching up objects such as tool boxes, flower pots, railings and many more.

Product benefits

- Nostalgic hammerblow effects
- "Hammered" surface structure
- High hiding power and fast drying
- Very good flow and easy processing
- Very productive
- Weather-resistant, for inside and outside
- Ideal for mailboxes, stairwells, tool boxes etc.

Material base

Nitro combination resins

Substrate

metal, wood, plastic, styrofoam, stone, ceramics, clay, glass such as rattan/raffia and cardboard/paper etc.

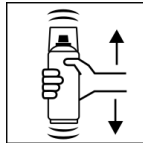
Processing

Protection measures



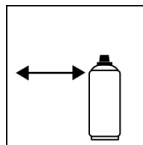
Wear personal protection equipment.
(gloves / goggles)
For more information, see safety data sheet.

Shake



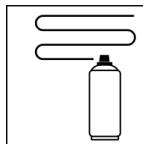
Shake can thoroughly for 2 minutes
- starting from when the mixing balls are heard.

Spraying distance



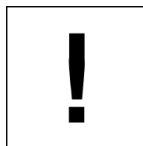
15 cm - 20 cm

Spray passes



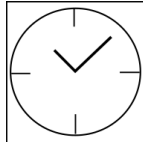
with 2 - 3 cross coats:
Hammerblow paint in the desired color pre-mist and
then fully with approx. 40 - 50 µm paint.

Processing conditions



The surface to be painted must be clean, dry and
free of grease.

Drying



dust dry: after approx. 20 min
dry to touch: after approx. 60 min
fully cured: after approx. 12 hours

Painting structure

Paintwork metal:

1. belton basic anti-rust primer (outside)
2. belton basic universal primer
3. belton special hammerblow effect paint

Wood:

1. belton basic wood primer
2. belton special hammerblow effect paint

Plastic:

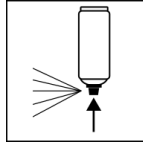
1. belton basic plastic primer
2. belton special hammerblow effect paint

Styrofoam:

1. belton basic styrofoam primer
2. belton special hammerblow effect paint

Recoatable with itself at any time.

Finish



After finishing the painting process can turn around and spray the valve empty.

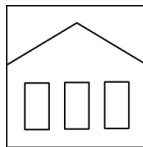
Additional Information

Please note

Please check plastic substrates for compatibility. All other substrates such as stone, clay, ceramics, glass, rattan/raffia, cardboard/paper should be primed with the belton universal primer.

Do not spray on synthetic resin painted surfaces, as the paint may pull up.

Shelf Life



The can is upright, dry and protected from chemical and mechanical influences to be stored and transported between 15 - 25° C.

The safety instructions on the can as well as all legal provisions of the storage location to note.

Disposal



The completely emptied spray cans must be disposed of in the recycling system. Cans with hardened material must be disposed of as special waste.

Note

Before use, the safety instructions must always be read carefully and observed.

The contents in this technical data sheet were created with great care and reflect our current state of knowledge. They provide the user with application-specific information and do not promise certain properties. The information is non-binding and we accept no liability for its integrity, accuracy and completeness. They do not relieve the user of their duty to check the suitability of our product for the intended purpose. The warnings printed on our labels must be respected. Our brands and patents are protected by copyright. All rights reserved We reserve the right to update, amend or supplement the content of the information without prior notice.