

## Technical Data Sheet

Peter Kwasny GmbH, Heilbronner Str. 96  
74831 Gundelsheim / Germany  
Phone: +496269 95-0, Fax: +496269 95-80  
www.spraymax.com / www.kwasny.com / info@kwasny.de

### belton® robust

Allround spray paint colour paint 400 ml

RAL 9010 pure white

satingloss

Art. Nr. 322211



## Product

### Description / Area of use

Solvent-based, robust and universally applicable synthetic resin combination paint. Ideal for interior and exterior decorative paintwork. Weather, UV, bump, scratch and shock resistant. Fast drying and high coverage. High colour brilliance and even colour gradient. For long-lasting, beautiful painting results.

### Product benefits

- Universally applicable all-round paint spray
- Solvent-based, for inside and outside
- Weather and UV-resistant
- Shock, scratch and impact resistant
- Fast drying
- High coverage
- High colour brilliance
- Uniform colour gradient
- Excellent painting results

### Material base

Synthetic resin combination paint

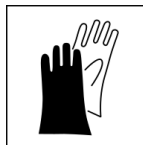
## Substrate

On many substrates, such as ferrous metals, wood, clay, stone, glass, ceramics, cardboard/paper can be used directly.

For higher corrosion protection requirements, pre-treat with belton rust protection primer. Check plastics for compatibility, if necessary prime with belton plastic primer if necessary. Sand down wood and old paintwork, remove rust if necessary.

## Processing

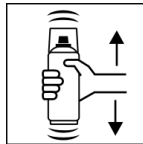
### Protection measures



Wear personal protection equipment.  
(gloves / goggles)

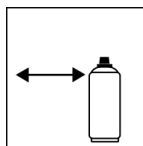
For more information, see safety data sheet.

### Shake



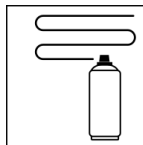
Shake can thoroughly for 2 minutes  
- starting from when the mixing balls are heard.

### Spraying distance



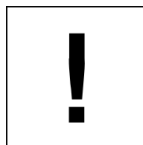
15 cm - 25 cm

### Spray passes



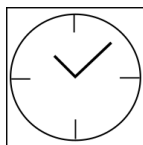
with 2 - 3 cross coats: approx. 50 - 60 µm

### Processing conditions



The surface to be painted must be clean, dry and free of grease.

### Drying



dust dry: after approx. 15 - 20 min

dry to touch: after approx. 50 - 60 min.

fully cured: after approx. 24 hours

### Painting structure

#### Paintwork metal:

1. belton basic anti-rust primer (outside)
2. belton robust shade
3. belton robust clear coat satingloss (optional)

#### Wood:

1. belton basic wood primer
2. belton robust shade
3. belton robust clear coat satingloss (optional)

## Plastic:

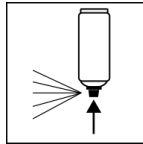
1. belton basic plastic primer
2. belton robust shade
3. belton robust clear coat satingloss (optional)

## Styrofoam:

1. belton basic styrofoam primer
2. belton robust shade
3. belton robust clear coat satingloss (optional)

Recoatable: With yourself at any time

## Finish



After finishing the painting process can turn around and spray the valve empty.

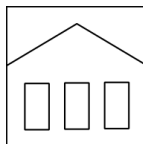
## Additional Information

### Please note

The shorter the spraying distance, the higher the working speed must be when painting. This is the only way that fine, filigree lines can be painted without any problems.

DO NOT spray on synthetic resin painted surface as paint may lift. Plastic substrates please check your tolerance. All other substrates such as stone, clay, ceramic, glass, cardboard/paper are (optional) included the belton universal primer.

## Shelf Life



The can is upright, dry and protected from chemical and mechanical influences to be stored and transported between 15 - 25° C.

The safety instructions on the can as well as all legal provisions of the storage location to note.

## Disposal



The completely emptied spray cans must be disposed of in the recycling system. Cans with hardened material must be disposed of as special waste.

**Note**

Before use, the safety instructions must always be read carefully and observed.

The contents in this technical data sheet were created with great care and reflect our current state of knowledge. They provide the user with application-specific information and do not promise certain properties. The information is non-binding and we accept no liability for its integrity, accuracy and completeness. They do not relieve the user of their duty to check the suitability of our product for the intended purpose. The warnings printed on our labels must be respected. Our brands and patents are protected by copyright. All rights reserved We reserve the right to update, amend or supplement the content of the information without prior notice.