

# Technical Data Sheet

Peter Kwasny GmbH, Heilbronner Str. 96  
74831 Gundelsheim / Germany  
Phone: +496269 95-0, Fax: +496269 95-80  
www.spraymax.com / www.kwasny.com / info@kwasny.de

## SPRAILA 2-layer clear coat 500 ml Art. Nr. 300917



### Product

#### Description / Purpose

The Spraila 2-layer clear coat is a high-quality, glossy clear coat for the permanent sealing of objects made of metal, wood, stone, glass, ceramics, clay, paper as well for most plastics. The quick-drying product is suitable for painting over objects painted with Auto-K paint sprays.

#### Properties

- Fast drying
- Brilliantly shiny
- Good chemical resistance
- Free of heavy metals: no lead, cadmium, chrome

#### Material base

Nitro combination resins

#### Colour

transparent

#### VOC Value (EU)

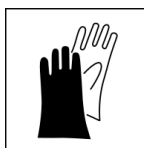
86,92

### Substrate

Metal, wood, stone, glass, ceramics, clay, paper, various plastics and for overcoating of Auto-K RACING products.

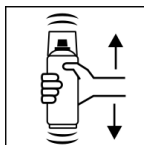
## Processing

### Protection measures



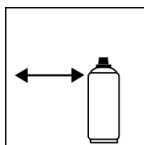
Wear personal protection equipment.  
(gloves / goggles)  
For more information, see safety data sheet.

### Shake



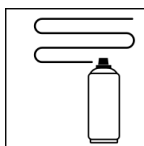
Shake can thoroughly for 2 minutes  
- starting from when the mixing balls are heard.

### Spraying distance



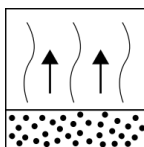
15 cm - 25 cm  
Hold the can as upright as possible.

### Spray passes



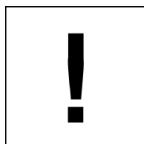
2 spray coats: approx. 30 -40 µm  
Crossing means spraying on an initially horizontal  
and then a vertical layer.

### Flash-off time



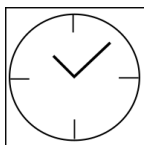
Flash time: approx. 5 - 10 min between the  
spray coat.

### Processing conditions



Optimum application at 18° C - 25° C.  
The substrate must be dry and free of dust and  
grease.

### Drying



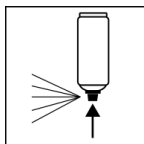
dust dry: 5 - 10 min  
dry to touch: after 30 - 40 min  
fully dried: after 24 hours

### Continue

Paintwork:  
1. Spraila anti-corrosion primer  
2. Spraila Universal primer  
3. Top coat  
4. Spraila 2 coat clear coat

Recoatable:  
With yourself at all times.

### Finish



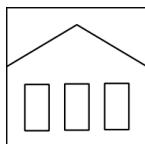
After finishing the painting process can turn over and  
spray valve empty to turn on to avoid sticking of the  
spray valve.

## Additional Information

### Important Information

Do not spray on synthetic resin painted surfaces, as the paint may pull up.

### Shelf Life



The can is upright, dry and protected from chemical and mechanical influences to be stored and transported between 15 - 25° C.

The safety instructions on the can as well as all legal provisions of the storage location to note.

### Disposal



The completely emptied spray cans must be disposed of in the recycling system. Cans with hardened material must be disposed of as special waste.

### Note

Before use, the safety instructions must always be read carefully and observed.

The contents in this technical data sheet were created with great care and reflect our current state of knowledge. They provide the user with application-specific information and do not promise certain properties. The information is non-binding and we accept no liability for its integrity, accuracy and completeness. They do not relieve the user of their duty to check the suitability of our product for the intended purpose. The warnings printed on our labels must be respected. Our brands and patents are protected by copyright. All rights reserved We reserve the right to update, amend or supplement the content of the information without prior notice.