

# Technical Data Sheet

Peter Kwasny GmbH, Heilbronner Str. 96  
74831 Gundelsheim / Germany  
Phone: +496269 95-0, Fax: +496269 95-80  
www.spraymax.com / www.kwasny.com / info@kwasny.de

## SPRAILA Spray paint white gloss 500 ml Art. Nr. 300904



### Product

#### Description / Purpose

The Spraila paint sprays are ideal for painting parts on the car and as a decorative finish for objects of all kinds, can be used around the house and garden. Spraila paint sprays are fast drying, very economical, scratch-resistant and weather-resistant. The Spraila spray paint range consists of a compact selection of colors.

#### Properties

- Good history
- High solids content
- Very productive
- Fast drying and thorough drying
- Resistant to scratches
- Lightfast and weatherproof
- Free of heavy metals: no lead, cadmium, chrome

#### Material base

Nitro combination paint

#### Colour

white gloss

#### VOC Value (EU)

88,00

### Substrate

Metal, wood, stone, glass, ceramics, clay, paper and some plastics.

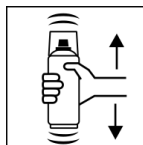
## Processing

### Protection measures



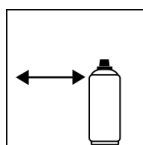
Wear personal protection equipment.  
(gloves / goggles)  
For more information, see safety data sheet.

### Shake



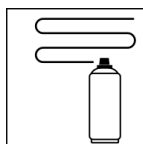
Shake can thoroughly for 2 minutes  
- starting from when the mixing balls are heard.

### Spraying distance



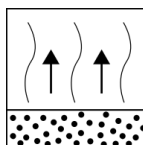
15 cm - 25 cm  
Hold the can as upright as possible.

### Spray passes



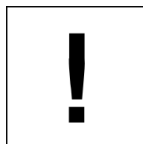
2 spray coats: approx. 40 - 50 µm  
Crossing means spraying on an initially horizontal  
and then a vertical layer.

### Flash-off time



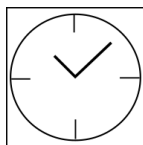
Flash time: approx. 5 - 10 min between the  
spray coat.

### Processing conditions



Optimum application at 18° C - 25° C.  
The substrate must be dry and free of dust and  
grease.

### Drying



dust dry: 20 min  
fully dried: after 12 hours

### Continue

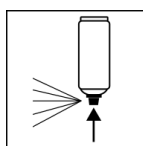
#### Paintwork:

Spraila sprays directly onto already painted or  
primed surfaces. With 2-layer paints, the Spraila  
becomes 2-layer Clear coat (Art. no. 300 017 and  
300 917) used.

#### Recoatable:

With yourself at all times.

### Finish



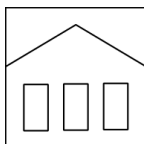
After finishing the painting process can  
turn around and spray the valve empty.

## Additional Information

### Important Information

Do not spray on synthetic resin painted surfaces, as the paint may pull up.

### Shelf Life



The can is upright, dry and protected from chemical and mechanical influences to be stored and transported between 15 - 25° C.

The safety instructions on the can as well as all legal provisions of the storage location to note.

### Disposal



The completely emptied spray cans must be disposed of in the recycling system. Cans with hardened material must be disposed of as special waste.

### Note

Before use, the safety instructions must always be read carefully and observed.

The contents in this technical data sheet were created with great care and reflect our current state of knowledge. They provide the user with application-specific information and do not promise certain properties. The information is non-binding and we accept no liability for its integrity, accuracy and completeness. They do not relieve the user of their duty to check the suitability of our product for the intended purpose. The warnings printed on our labels must be respected. Our brands and patents are protected by copyright. All rights reserved We reserve the right to update, amend or supplement the content of the information without prior notice.