

# Technical Data Sheet

Peter Kwasny GmbH, Heilbronner Str. 96  
74831 Gundelsheim / Germany  
Phone: +496269 95-0, Fax: +496269 95-80  
www.spraymax.com / www.kwasny.com / info@kwasny.de

## SPRAILA

Heat resistant 650° black

400 ml

Art. Nr. 300041



## Product

### Description / Purpose

Spraila heat resistant 650° C is perfect for strong Temperature-stressed parts on the car and in the Household, such as exhaust pipes, garden grills, heating boilers and cast iron stoves.  
The Spraila paint spray is extreme up to 650° C heat-resistant, resilient and weather-resistant.

### Properties

- Extremely heat-resistant up to 650° C
- Weather resistant
- Resilient
- Free of heavy metals: no lead, cadmium, chrome

Material base

silicone resins

Colour

black

VOC Value (EU)

88,64

## Substrate

Exhausts, garden grills, boilers, cast iron stoves, etc.

## Processing

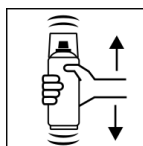
### Protection measures



Wear personal protection equipment.  
(gloves / goggles)

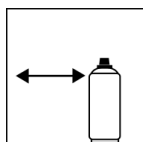
For more information, see safety data sheet.

**Shake**



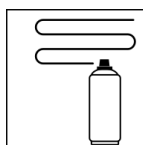
Shake can thoroughly for 2 minutes  
- starting from when the mixing balls are heard.

**Spraying distance**



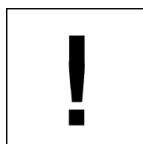
15 cm - 25 cm  
Hold the can as upright as possible.

**Spray passes**



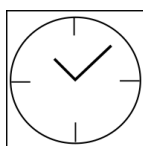
1 spray coat: approx. 7 µm  
Crossing means spraying on an initially horizontal and then a vertical layer.

**Processing conditions**



Optimum application at 18° C - 25° C.  
The substrate must be dry and free of dust and grease.

**Drying**

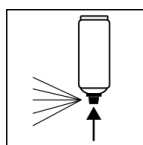


dust dry: 30 min  
Warm up slowly  
Paint only hardens at temperatures above +250° C.

**Continue**

No pre-treatment with primers and no after-treatment with further top coats and clear coats necessary.  
Recoatable:  
With yourself at all times.

**Finish**



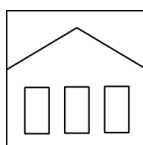
After finishing the painting process can turn over and spray valve empty to turn on to avoid sticking of the spray valve.

**Additional Information**

**Important Information**

No pre-treatment with primers and no after-treatment with further top coats and clear coats necessary.

**Shelf Life**



The can is upright, dry and protected from chemical and mechanical influences to be stored and transported between 15 - 25° C.  
The safety instructions on the can as well as all legal provisions of the storage location to note.

## Disposal



The completely emptied spray cans must be disposed of in the recycling system. Cans with hardened material must be disposed of as special waste.

## Note

Before use, the safety instructions must always be read carefully and observed.

The contents in this technical data sheet were created with great care and reflect our current state of knowledge. They provide the user with application-specific information and do not promise certain properties. The information is non-binding and we accept no liability for its integrity, accuracy and completeness. They do not relieve the user of their duty to check the suitability of our product for the intended purpose. The warnings printed on our labels must be respected. Our brands and patents are protected by copyright. All rights reserved We reserve the right to update, amend or supplement the content of the information without prior notice.