

# Technical Data Sheet

Peter Kwasny GmbH, Heilbronner Str. 96  
 74831 Gundelsheim / Germany  
 Phone: +496269 95-0, Fax: +496269 95-80  
 www.spraymax.com / www.kwasny.com / info@kwasny.de

**RACING**  
**Spray paint matt black**  
**500 ml**  
**Art. Nr. 288921**



## Product

### Description / Purpose

The racing paint sprays are perfect for decorative painting of car parts and as a protective paint for all kinds of objects in the house and garden. The racing paint sprays are quick-drying, very economical, scratch-resistant and weather-resistant. The racing spray paint range includes a selection of common colors.

### Properties

Auto-K Racing is also available as a clear coat.

- Good history
- High solids content
- Very productive
- Fast drying and thorough drying
- Resistant to scratches
- Lightfast and weatherproof
- Free of heavy metals: no lead, cadmium, chrome

### Material base

Nitro combination paint

### Colour

black

### Gloss level

matt

### VOC Value (EU)

88,00

## Substrate

Metal (cleaned, sanded, free of dust and grease)  
 various plastics

Here before in an inconspicuous place Check compatibility and liability. Possibly with a pre-prime a suitable plastic adhesion promoter.  
 Wood, paper, ceramic, clay, stone, glass  
 (surfaces must cleaned, free of dust and grease)

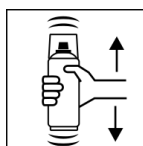
## Processing

### Protection measures



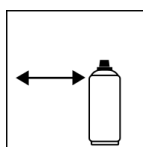
Wear personal protection equipment.  
 (gloves / goggles)  
 For more information, see safety data sheet.

### Shake



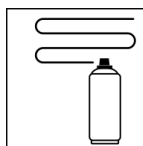
Shake can thoroughly for 2 minutes  
 - starting from when the mixing balls are heard.

### Spraying distance



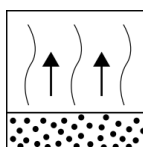
15 cm - 25 cm  
 Hold the can as upright as possible.

### Spray passes



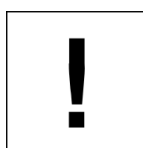
2 spray coats: approx. 40 - 50 µm  
 Crossing means spraying on an initially horizontal and then a vertical layer.

### Flash-off time



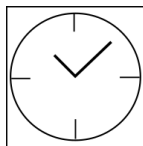
Flash time: approx. 2 - 3 min between the spray coat.

### Processing conditions



Optimum application at 18° C - 25° C.  
 The substrate must be dry and free of dust and grease.

### Drying

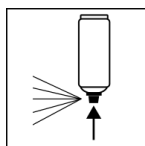


dust dry: 5 - 10 min  
 fully dried: after 24 hours

### Continue

Paintwork:  
 1.) Depending on the substrate, areas with appropriate Pre-treat primer.  
 2.) Racing sprays directly onto primed surface spray.  
 Recoatable with itself at any time.

## Finish



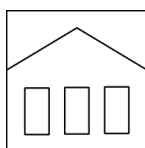
After finishing the painting process can turn over and spray valve empty to turn on to avoid sticking of the spray valve.

## Additional Information

### Important Information

Do not spray on synthetic resin painted surfaces, as the paint may pull up.

### Shelf Life



The can is upright, dry and protected from chemical and mechanical influences to be stored and transported between 15 - 25° C.

The safety instructions on the can as well as all legal provisions of the storage location to note.

### Disposal



The completely emptied spray cans must be disposed of in the recycling system. Cans with hardened material must be disposed of as special waste.

### Note

Before use, the safety instructions must always be read carefully and observed.

The contents in this technical data sheet were created with great care and reflect our current state of knowledge. They provide the user with application-specific information and do not promise certain properties. The information is non-binding and we accept no liability for its integrity, accuracy and completeness. They do not relieve the user of their duty to check the suitability of our product for the intended purpose. The warnings printed on our labels must be respected. Our brands and patents are protected by copyright. All rights reserved We reserve the right to update, amend or supplement the content of the information without prior notice.