

Technical Data Sheet

Peter Kwasny GmbH, Heilbronner Str. 96
74831 Gundelsheim / Germany
Phone: +496269 95-0, Fax: +496269 95-80
www.spraymax.com / www.kwasny.com / info@kwasny.de

RACING
Universal primer grey
500 ml
Art. Nr. 288901



Product

Description / Purpose

The racing universal primer ensures solid preparation for painting. The product creates one smooth surface and good adhesion for all objects made of wood, metal, stone, glass etc. and the subsequent top coat.

Properties

- Provides a smooth surface
- Uniform top coat
- Good adhesion
- High filling capacity
- Very good history
- Fast drying
- Easy to grind
- Free of heavy metals: no lead, cadmium, chrome

Material base

Nitro combination paint

Colour

grey

VOC Value (EU)

86,75

Substrate

Metal (cleaned, sanded, free of dust and grease)

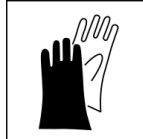
Various plastics

Here before in an inconspicuous place check compatibility and adhesion. If necessary, prime with a suitable plastic adhesion promoter.

Wood, paper, ceramic, clay, stone, glass
(surfaces must be cleaned, free of dust and grease)

Processing

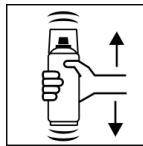
Protection measures



Wear personal protection equipment.
(gloves / goggles)

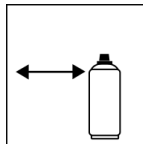
For more information, see safety data sheet.

Shake



Shake can thoroughly for 2 minutes
- starting from when the mixing balls are heard.

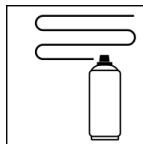
Spraying distance



15 cm - 25 cm

Hold the can as upright as possible.

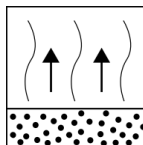
Spray passes



2 spray coats: approx. 50 - 60 µm

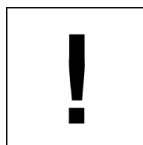
Crossing means spraying on an initially horizontal
and then a vertical layer.

Flash-off time



Flash time: approx. 5 - 10 min between the
spray coat.

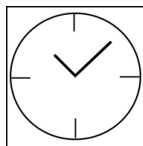
Processing conditions



Optimum application at 18° C - 25° C.

The substrate must be dry and free of dust and
grease.

Drying



dust dry: 20 min

fully dried: after 12 hours

Continue

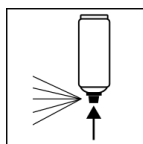
Paintwork:

1. Racing anti-corrosion primer
2. Racing universal primer
3. Top coat

Recoat with itself at any time.

With all racing paints at any time.

Finish



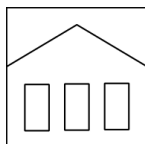
After finishing the painting process can turn over and
spray valve empty to turn on to avoid sticking of the
spray valve.

Additional Information

Important Information

Do not spray on synthetic resin painted surfaces, as the paint may pull up.

Shelf Life



The can is upright, dry and protected from chemical and mechanical influences to be stored and transported between 15 - 25° C.

The safety instructions on the can as well as all legal provisions of the storage location to note.

Disposal



The completely emptied spray cans must be disposed of in the recycling system. Cans with hardened material must be disposed of as special waste.

Note

Before use, the safety instructions must always be read carefully and observed.

The contents in this technical data sheet were created with great care and reflect our current state of knowledge. They provide the user with application-specific information and do not promise certain properties. The information is non-binding and we accept no liability for its integrity, accuracy and completeness. They do not relieve the user of their duty to check the suitability of our product for the intended purpose. The warnings printed on our labels must be respected. Our brands and patents are protected by copyright. All rights reserved We reserve the right to update, amend or supplement the content of the information without prior notice.