

Technical Data Sheet

Peter Kwasny GmbH, Heilbronner Str. 96
74831 Gundelsheim / Germany
Phone: +496269 95-0, Fax: +496269 95-80
www.spraymax.com / www.kwasny.com / info@kwasny.de

RACING **Spray paint high gloss** **RAL 5014 pigeon blue** **Art. Nr. 288135**



Product

Description / Purpose

The racing paint sprays are ideal for high-quality vehicle paintwork and decorative painting tasks of all kinds. Also suitable for industrially nominated shades and objects in the house and garden. The racing paint sprays are fast drying, productive, scratch-resistant and weather-resistant. The racing spray paint range includes a Selection of popular colors. Auto-K Racing is also available as a clear coat.

Properties

- Good course
- High solids content
- Very productive
- Fast drying and thorough drying
- Resistant to scratches
- Lightfast and weatherproof
- Free of heavy metals: no lead, cadmium, chrome

Material base

Nitro combination paint

Colour

pigeon blue

Gloss level

high gloss

VOC Value (EU)

88,00

Substrate

Metal (cleaned, sanded, free of dust and grease)

Aluminium, galvanized surfaces

(pre-treat with a suitable primer beforehand).

Various plastics

Here before in an inconspicuous place Check compatibility and liability. Possibly with a pre-prime a suitable plastic adhesion promoter.

Wood, glass, ceramic

Processing

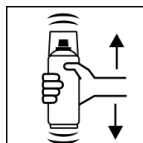
Protection measures



Wear personal protection equipment.
(gloves / goggles)

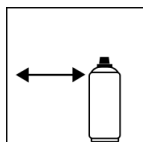
For more information, see safety data sheet.

Shake



Shake can thoroughly for 2 minutes
- starting from when the mixing balls are heard.

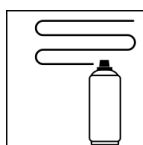
Spraying distance



15 cm - 25 cm

Hold the can as upright as possible.

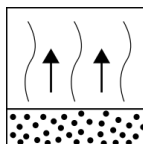
Spray passes



2 spray coats: approx. 40 - 50 µm

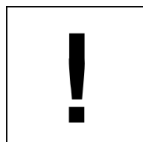
Crossing means spraying on an initially horizontal and then a vertical layer.

Flash-off time



Flash time: approx. 3 - 5 min between the spray coat.

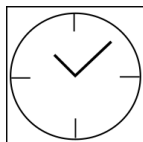
Processing conditions



Optimum application at 18° C - 25° C.

The substrate must be dry and free of dust and grease.

Drying



dust dry: 5 - 10 min

fully dried: after 24 hours

Continue

Paintwork:

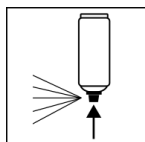
1. Racing sprays directly on the cleaned and spray primed surfaces.

Recoat with itself at any time.

After drying:

With Auto-K Racing Clear Coat every time.

Finish



After finishing the painting process can turn over and spray valve empty to turn on to avoid sticking of the spray valve.

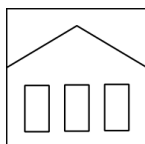
Additional Information

Important Information

Do not spray on synthetic resin painted surfaces, as the paint may pull up.

Do not coat any safety-relevant plastic parts such as crash helmets, as the mechanical properties could be adversely affected.

Shelf Life



The can is upright, dry and protected from chemical and mechanical influences to be stored and transported between 15 - 25° C.

The safety instructions on the can as well as all legal provisions of the storage location to note.

Disposal



The completely emptied spray cans must be disposed of in the recycling system. Cans with hardened material must be disposed of as special waste.

Note

Before use, the safety instructions must always be read carefully and observed.

The contents in this technical data sheet were created with great care and reflect our current state of knowledge. They provide the user with application-specific information and do not promise certain properties. The information is non-binding and we accept no liability for its integrity, accuracy and completeness. They do not relieve the user of their duty to check the suitability of our product for the intended purpose. The warnings printed on our labels must be respected. Our brands and patents are protected by copyright. All rights reserved We reserve the right to update, amend or supplement the content of the information without prior notice.