

# Technical Data Sheet

Peter Kwasny GmbH, Heilbronner Str. 96  
74831 Gundelsheim / Germany  
Phone: +496269 95-0, Fax: +496269 95-80  
www.spraymax.com / www.kwasny.com / info@kwasny.de

## RACING Zinc aluminum spray 400 ml Art. Nr. 288057



### Product

#### Description / Purpose

Racing Zinc-Alu-Spray is the ideal corrosion protection of water and weather as well as for the repair of damaged zinc surfaces.

Can be used for heating systems, pipelines, steel structures, radiators, railings as well as for the coating of inner panel edges spot welding.

#### Properties

- Fast drying
- Very productive
- Good chemical resistance
- Free of heavy metals: no lead, cadmium, chrome

#### Material base

Acrylic resins

#### VOC Value (EU)

87,13

### Substrate

Heating systems, pipelines, steel structures, radiators, railings, crash barriers, etc.

### Processing

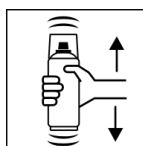
#### Protection measures



Wear personal protection equipment.  
(gloves / goggles)

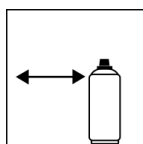
For more information, see safety data sheet.

**Shake**



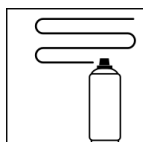
Shake can thoroughly for 2 minutes  
- starting from when the mixing balls are heard.

**Spraying distance**



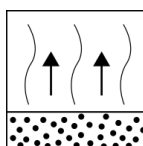
15 cm - 25 cm  
Hold the can as upright as possible.

**Spray passes**



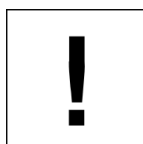
2 spray coats: approx. 30 - 40 µm  
Crossing means spraying on an initially horizontal and then a vertical layer.

**Flash-off time**



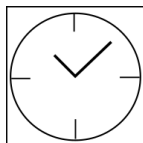
Flash time: approx. 5 min between the spray coat.

**Processing conditions**



Optimum application at 18° C - 25° C.  
The substrate must be dry and free of dust and grease.

**Drying**

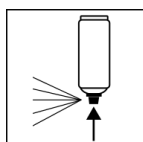


dust dry: after 5 - 10 min  
dry to touch: after 30 - 40 min  
fully dried: after 24 hours

**Continue**

Paintwork:  
No pre-treatment with primers.  
No post-treatment with further cover and clear coats required. Can be painted over with itself after approx. 10 min.  
With other racing paints, it is first necessary to test on a test piece whether the zinc-aluminum layer can be painted over with the desired top coat.

**Finish**



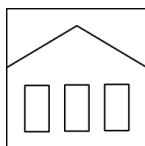
After finishing the painting process can turn over and spray valve empty to turn on to avoid sticking of the spray valve.

**Additional Information**

**Important Information**

Do not spray on synthetic resin painted surfaces, as the paint may pull up.

## Shelf Life



The can is upright, dry and protected from chemical and mechanical influences to be stored and transported between 15 - 25° C.

The safety instructions on the can as well as all legal provisions of the storage location to note.

## Disposal



The completely emptied spray cans must be disposed of in the recycling system. Cans with hardened material must be disposed of as special waste.

## Note

Before use, the safety instructions must always be read carefully and observed.

The contents in this technical data sheet were created with great care and reflect our current state of knowledge. They provide the user with application-specific information and do not promise certain properties. The information is non-binding and we accept no liability for its integrity, accuracy and completeness. They do not relieve the user of their duty to check the suitability of our product for the intended purpose. The warnings printed on our labels must be respected. Our brands and patents are protected by copyright. All rights reserved We reserve the right to update, amend or supplement the content of the information without prior notice.