

Technical Data Sheet

Peter Kwasny GmbH, Heilbronner Str. 96
74831 Gundelsheim / Germany
Phone: +496269 95-0, Fax: +496269 95-80
www.spraymax.com / www.kwasny.com / info@kwasny.de

RACING
Chrome effect
400 ml
Art. Nr. 288023



Product

Description / Purpose

Racing chrome effect is a quick drying Acrylic paint that is characterized by very good opacity, high light and temperature resistance and maximum yield. This effect gives any smooth surface a metallic, silver-chrome-like effect. For appreciation and Embellishment of individual car parts. It is weatherproof to a limited extent, but not abrasion-resistant.

Properties

- Fast drying
- High light and temperature resistance
- Very productive
- Good history
- Good hiding power
- High chemical resistance
- Metallic luster with high reflectivity
- NOT abrasion resistant
- Cap does not match content
- Free of heavy metals: no lead, cadmium

Material base

Acrylic resin

Colour

chrome

VOC Value (EU)

87,14

Substrate

Metals, sheets

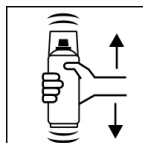
Processing

Protection measures



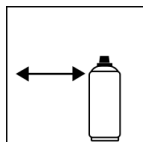
Wear personal protection equipment.
(gloves / goggles)
For more information, see safety data sheet.

Shake



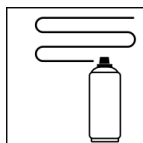
Shake can thoroughly for 2 minutes
- starting from when the mixing balls are heard.

Spraying distance



15 cm - 25 cm
Hold the can as upright as possible.

Spray passes



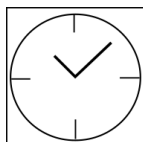
1 spray coat: approx. 15 - 20 μm
Crossing means spraying on an initially horizontal
and then a vertical layer.

Processing conditions



Optimum application at 18° C - 25° C.
The substrate must be dry and free of dust and
grease.

Drying



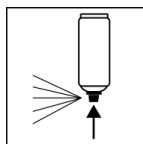
dust dry: after 20 min
dry to touch: after 30 - 40 min
fully dried: after 12 hours

Continue

Paintwork:

1. Racing anti-corrosion primer
 2. Racing universal primer
 3. Racing chrome effect
- Recoatable with itself at any time.

Finish



After finishing the painting process can turn over and
spray valve empty to turn on to avoid sticking of the
spray valve.

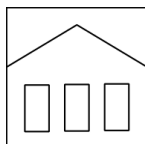
Additional Information

Important Information

ATTENTION!

Do not spray over the chrome effect with clear coat, otherwise the special chrome effect will be lost.

Shelf Life



The can is upright, dry and protected from chemical and mechanical influences to be stored and transported between 15 - 25° C.

The safety instructions on the can as well as all legal provisions of the storage location to note.

Disposal



The completely emptied spray cans must be disposed of in the recycling system. Cans with hardened material must be disposed of as special waste.

Note

Before use, the safety instructions must always be read carefully and observed.

The contents in this technical data sheet were created with great care and reflect our current state of knowledge. They provide the user with application-specific information and do not promise certain properties. The information is non-binding and we accept no liability for its integrity, accuracy and completeness. They do not relieve the user of their duty to check the suitability of our product for the intended purpose. The warnings printed on our labels must be respected. Our brands and patents are protected by copyright. All rights reserved We reserve the right to update, amend or supplement the content of the information without prior notice.