

# Technical Data Sheet

Peter Kwasny GmbH, Heilbronner Str. 96  
74831 Gundelsheim / Germany  
Phone: +496269 95-0, Fax: +496269 95-80  
www.spraymax.com / www.kwasny.com / info@kwasny.de

**SprayTEC**  
**Stone chip and underbody protection**  
**Spray can white**  
**500 ml**  
**Art. Nr. 235505**



## Product

### Description / Purpose

SprayTec Stone Chip & Underbody Protection is a synthetic resin and rubber-based underbody coating material that can be painted over. Specially developed for a run-free application for immediate processing as a spray or as ready-to-spray funnel bottle with the suction air or airless gun. Forms a permanently elastic protective layer against stone chips of all kinds. SprayTec stone chip & underbody protection is used on the outside of car bodies. The vehicle is permanently protected against mechanical and chemical influences.

### Properties

- Highest corrosion resistance after DIN 53210SS
- Outstanding adhesion
- Highest abrasion resistance
- Fast drying
- Very high elasticity (= tough elastic)
- Effectively protects against heat and cold (can be used from 5 - 35° C)
- Protects permanently against mechanical and chemical influences such as stone chips, road salt, rust, water, ice, snow and corrosion.
- Can be painted over with any paint system (after complete drying)

**Colour** white

## Substrate

Exteriors of car bodies, trucks, Vehicles, spoilers, rear skirts, rocker panels, caravans, tanks, boats, etc.

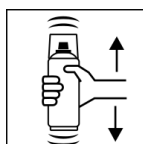
## Processing

### Protection measures



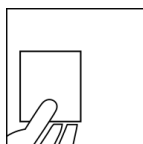
Wear personal protection equipment.  
(gloves / goggles)  
For more information, see safety data sheet.

### Shake



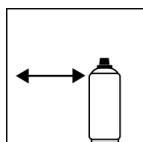
Shake the can thoroughly for 3 minutes before use.

### Spray to test



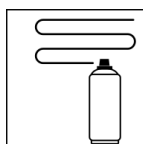
test spraying

### Spraying distance



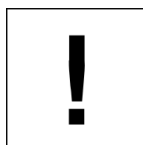
20 cm - 30 cm  
Hold the can as upright as possible.

### Spray passes



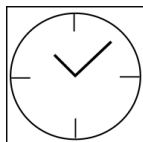
Spray the product crosswise in several layers.  
Crossing means spraying on one first horizontal and then one vertical layer.

### Processing conditions



Optimum application at 18° C - 25° C.  
The substrate must be dry and free of dust and grease.

### Drying



dry to touch: after approx. 2 hour  
fully dried: after 24 hour

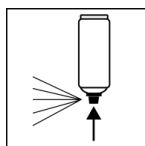
### Continue

The surface to be treated must be thoroughly cleaned of penetrating oil, tar and wax residue.  
Removal possible with white spirit.  
Mask off areas not to be sprayed generously.  
NOT on the engine, transmission, braking point and  
Spray exhaust pipes.

Splashes on the body immediately with one remove a rag soaked in gasoline or petroleum.

After complete solidification with each Paint system can be painted over.

## Finish

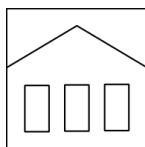


After use, turn the can upside down and spray the valve completely empty.

Clean used tools accordingly.

## Additional Information

### Shelf Life



The can is upright, dry and protected from chemical and mechanical influences to be stored and transported between 15 - 25° C.

The safety instructions on the can as well as all legal provisions of the storage location to note.

### Disposal



The completely emptied spray cans must be disposed of in the recycling system. Cans with hardened material must be disposed of as special waste.

### Note

Before use, the safety instructions must always be read carefully and observed.

The contents in this technical data sheet were created with great care and reflect our current state of knowledge. They provide the user with application-specific information and do not promise certain properties. The information is non-binding and we accept no liability for its integrity, accuracy and completeness. They do not relieve the user of their duty to check the suitability of our product for the intended purpose. The warnings printed on our labels must be respected. Our brands and patents are protected by copyright. All rights reserved We reserve the right to update, amend or supplement the content of the information without prior notice.