

# Technical Data Sheet

Peter Kwasny GmbH, Heilbronner Str. 96  
74831 Gundelsheim / Germany  
Phone: +496269 95-0, Fax: +496269 95-80  
www.spraymax.com / www.kwasny.com / info@kwasny.de

## SprayTEC Underseal wax Spray can light brown 500 ml Art. Nr. 235501



### Product

#### Description / Purpose

SprayTec underseal wax, light brown is a high-quality wax-based coating material. Specially designed for a drain-free Application for immediate processing as a spray or as a ready-to-use funnel bottle with the Suction air or airless gun. After drying out, a resilient, weather-resistant protective layer is formed. The vehicle is permanently protected against mechanical and chemical influences by the waxy layer.

#### Properties

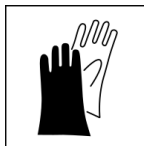
- Highest corrosion resistance after DIN 53210SS
- Outstanding adhesion
- Highest abrasion resistance
- Very high elasticity
- Effectively protects against heat and cold (can be used from 5 - 35° C)
- Waxy layer protects permanently against stone chips, road salt, rust, water, ice, snow and corrosion damage
- Please DO NOT paint over

### Substrate

Cars, trucks, vehicles, machines, caravans, tanks, boats, etc. in the area of underbody and wheel arches.

## Processing

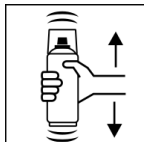
### Protection measures



Wear personal protection equipment.  
(gloves / goggles)

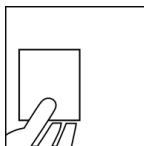
For more information, see safety data sheet.

### Shake



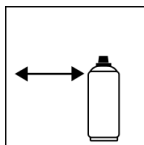
Shake the can thoroughly for 3 minutes before use.

### Spray to test



test spraying

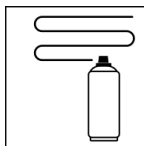
### Spraying distance



20 cm - 30 cm

Hold the can as upright as possible.

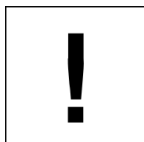
### Spray passes



Spray the product crosswise in several layers.

Crossing means spraying on one first horizontal and then one vertical layer.

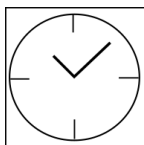
### Processing conditions



Optimum application at 18° C - 25° C.

The substrate must be dry and free of dust and grease.

### Drying



dry to touch: after approx. 3 - 4 hour

fully dried: after 24 hour

### Continue

The surface to be treated must be thoroughly cleaned of penetrating oil, tar and wax residue.

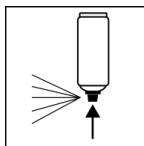
Removal possible with white spirit.

Mask off areas not to be sprayed generously.

Not on the engine, transmission, braking point and

Spray exhaust pipes.

### Finish



After use, turn the can upside down and spray the valve completely empty.

Clean used tools accordingly.

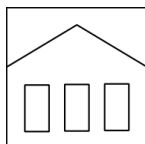
## **Additional Information**

### **Important Information**

Please do NOT paint over.

Remove splashes on the body immediately with a cloth soaked in gasoline or petroleum.

### **Shelf Life**



The can is upright, dry and protected from chemical and mechanical influences to be stored and transported between 15 - 25° C.

The safety instructions on the can as well as all legal provisions of the storage location to note.

### **Disposal**



The completely emptied spray cans must be disposed of in the recycling system. Cans with hardened material must be disposed of as special waste.

### **Note**

Before use, the safety instructions must always be read carefully and observed.

The contents in this technical data sheet were created with great care and reflect our current state of knowledge. They provide the user with application-specific information and do not promise certain properties. The information is non-binding and we accept no liability for its integrity, accuracy and completeness. They do not relieve the user of their duty to check the suitability of our product for the intended purpose. The warnings printed on our labels must be respected. Our brands and patents are protected by copyright. All rights reserved We reserve the right to update, amend or supplement the content of the information without prior notice.