

Technical Data Sheet

Peter Kwasny GmbH, Heilbronner Str. 96
74831 Gundelsheim / Germany
Phone: +496269 95-0, Fax: +496269 95-80
www.spraymax.com / www.kwasny.com / info@kwasny.de

SprayTEC

Underbody protection - bitumen

Spray can black

500 ml

Art. Nr. 235500



Product

Description / Purpose

SprayTec underbody protection is a high-quality bitumen-based underbody coating material. Specially designed for a drain-free Application. Reliably protects the car Stone chips, rust, road salt, water, corrosion, ice and snow. SprayTec underbody protection bitumen has the highest corrosion resistance, excellent adhesion and the highest abrasion resistance. A thick, elastic layer will do that Vehicle durable against mechanical and chemical influences protected.

Properties

- Highest corrosion resistance after DIN 53210SS
- Salt spray test 200 hours
- Outstanding adhesion
- Highest abrasion resistance
- Very high elasticity
- Effectively protects against heat and cold (can be used from 5 - 35° C)
- Protects permanently against mechanical and chemical influences
- Anti-drum set effective
- Please DO NOT paint over

Colour

black

VOC Value (EU)

67,00

Substrate

Cars, trucks, vehicles, machines, caravans, tanks, boats, etc. in the area of underbody and wheel arches.

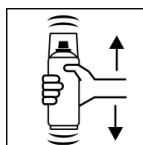
Processing

Protection measures



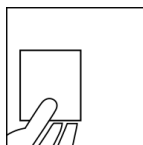
Wear personal protection equipment.
(gloves / goggles)
For more information, see safety data sheet.

Shake



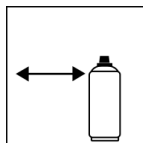
Shake the can thoroughly for 3 minutes before use.

Spray to test



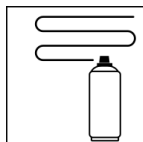
test spraying

Spraying distance



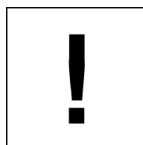
20 cm - 30 cm
Hold the can as upright as possible.

Spray passes



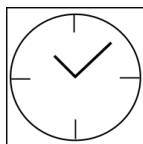
Spray the product crosswise in several layers.
Crossing means spraying on one first horizontal and then one vertical layer.

Processing conditions



Optimum application at 18° C - 25° C.
The substrate must be dry and free of dust and grease.

Drying

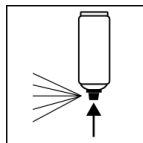


dry to touch: after approx. 5 hour
fully dried: after 24 hour

Continue

The surface to be treated must be thoroughly cleaned of penetrating oil, tar and wax residue.
Removal possible with white spirit.
Mask off areas not to be sprayed generously.
Not on the engine, transmission, braking point and
Spray exhaust pipes.
Splashes on the body immediately with one remove a rag soaked in gasoline or petroleum.

Finish



After use, turn the can upside down and spray the valve completely empty.

Clean used tools accordingly

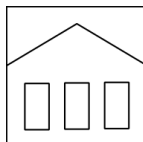
Additional Information

Important Information

DO NOT paint over.

Not on the engine, transmission, braking point and
Spray exhaust pipes.

Shelf Life



The can is upright, dry and protected from chemical and mechanical influences to be stored and transported between 15 - 25° C.

The safety instructions on the can as well as all legal provisions of the storage location to note.

Disposal



The completely emptied spray cans must be disposed of in the recycling system. Cans with hardened material must be disposed of as special waste.

Note

Before use, the safety instructions must always be read carefully and observed.

The contents in this technical data sheet were created with great care and reflect our current state of knowledge. They provide the user with application-specific information and do not promise certain properties. The information is non-binding and we accept no liability for its integrity, accuracy and completeness. They do not relieve the user of their duty to check the suitability of our product for the intended purpose. The warnings printed on our labels must be respected. Our brands and patents are protected by copyright. All rights reserved We reserve the right to update, amend or supplement the content of the information without prior notice.