

Technical Data Sheet

Peter Kwasny GmbH, Heilbronner Str. 96
74831 Gundelsheim / Germany
Phone: +496269 95-0, Fax: +496269 95-80
www.spraymax.com / www.kwasny.com / info@kwasny.de

SprayTEC **Glue spray** **400 ml** **Art. Nr. 235050**



Product

Description / Purpose

The SprayTec adhesive spray is a highly effective, universal glue, which can be used as assembly, pressure-sensitive and contact adhesive for a wide range of applications.

For permanent, highly adhesive stickers of all kinds. SprayTec adhesive spray sticks quickly and reliably and is easy and clean to use.

Properties

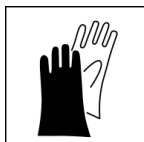
- Universal all-purpose adhesive
- Bonds reliably and quickly
- Can be used universally on the following materials
- Clean to use
- Practical and uncomplicated to use

Substrate

Metals (e.g. steel, aluminium, copper, brass), painted sheet metal, foam, plastic, styrofoam, rubber, leather, textiles, wood, glass wool, felt, cardboard, polyester materials, ceramics and much more.

Processing

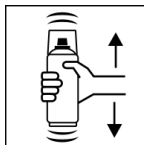
Protection measures



Wear personal protection equipment.
(gloves / goggles)

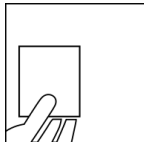
For more information, see safety data sheet.

Shake



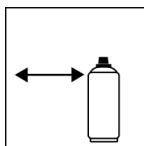
Rinse the can thoroughly for about 30 sec. before use shake.

Spray to test



test spraying

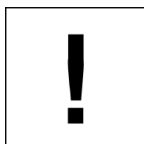
Spraying distance



15 cm - 20 cm

Hold the can as upright as possible.

Processing conditions



Optimum application at 18° C - 25° C.

The substrate must be dry and free of dust and grease.

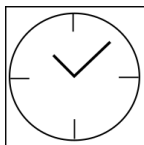
Bonding

Apply the adhesive spray evenly crosswise to both surfaces to be bonded.

After approx. 5 minutes the parts to be glued fit together precisely and press firmly.

When applied to one side, no stress bonding can be carried out.

Drying



pre-drying: approx. 5 minutes

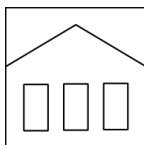
application window: 60 minutes

complete curing: after 120 minutes

The specified values refer to a temperature of 20° C and a relative humidity of 50 %. The drying times depend on the absorbency of the substrate and the thickness of the sprayed layer.

Additional Information

Shelf Life



The can is upright, dry and protected from chemical and mechanical influences to be stored and transported between 15 - 25° C.

The safety instructions on the can as well as all legal provisions of the storage location to note.

Disposal



The completely emptied spray cans must be disposed of in the recycling system. Cans with hardened material must be disposed of as special waste.

Note

Before use, the safety instructions must always be read carefully and observed.

The contents in this technical data sheet were created with great care and reflect our current state of knowledge. They provide the user with application-specific information and do not promise certain properties. The information is non-binding and we accept no liability for its integrity, accuracy and completeness. They do not relieve the user of their duty to check the suitability of our product for the intended purpose. The warnings printed on our labels must be respected. Our brands and patents are protected by copyright. All rights reserved We reserve the right to update, amend or supplement the content of the information without prior notice.