

# Technical Data Sheet

Peter Kwasny GmbH, Heilbronner Str. 96  
74831 Gundelsheim / Germany  
Phone: +496269 95-0, Fax: +496269 95-80  
www.spraymax.com / www.kwasny.com / info@kwasny.de

**SprayTEC**  
**Copper spray**  
**400 ml**  
**Art. Nr. 235040**



## Product

### Description / Purpose

SprayTec Copper Spray is a high-temperature lubricant with separating metal pigments (-30° C to +1100° C), the one about a very good Adhesive power, high water, pressure and corrosion resistance.

SprayTec copper spray is characterized by excellent heat resistance and extreme ability to creep and prevents rust, burning or seizing metal parts.

The product stops permanently Squeaking and whistling noises.

Can also be used in the home and leisure area.

### Properties

- Lubricants for thermally highly stressed sliding points
- Prevents squeaking and whistling noises brakes
- Stops burning, seizing of screws and threaded connections
- Very good adhesion
- High water and pressure resistance
- Very good corrosion resistance
- Withstands high temperatures
- Equipped with copper pigments
- Enables spray tubes on the spray head precise spraying

## Substrate

For all sliding points, the high temperatures exposed like disc brakes, Brake pad backs, guides, springs, brake shoe bolts, spark plug threads, cylinder head screws, exhaust connectors and exhaust bolts, battery clamps, etc.

Can also be used in the home and leisure area, e.g. for screws, threaded connections, hinges, locks, sliders and guides.

## Processing

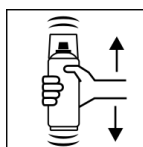
### Protection measures



Wear personal protection equipment.  
(gloves / goggles)

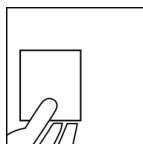
For more information, see safety data sheet.

### Shake



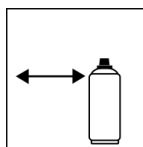
Rinse the can thoroughly for about 30 sec. before use shake.

### Spray to test



test spraying

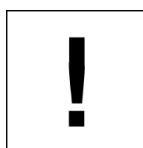
### Spraying distance



15 cm - 20 cm

Hold the can as upright as possible.

### Processing conditions



Optimum application at 18° C - 25° C.

The substrate must be dry and free of dust and grease.

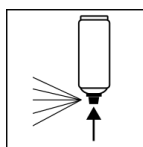
### Continue

Surfaces to be treated must be clean, dry, free of grease and rust.

If necessary, clean surfaces beforehand.

Apply the required amount of copper spray.

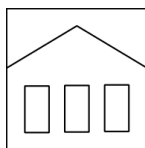
### Finish



After use, turn the can upside down and spray the valve completely empty.

## Additional Information

### Shelf Life



The can is upright, dry and protected from chemical and mechanical influences to be stored and transported between 15 - 25° C.

The safety instructions on the can as well as all legal provisions of the storage location to note.

### Disposal



The completely emptied spray cans must be disposed of in the recycling system. Cans with hardened material must be disposed of as special waste.

### Note

Before use, the safety instructions must always be read carefully and observed.

The contents in this technical data sheet were created with great care and reflect our current state of knowledge. They provide the user with application-specific information and do not promise certain properties. The information is non-binding and we accept no liability for its integrity, accuracy and completeness. They do not relieve the user of their duty to check the suitability of our product for the intended purpose. The warnings printed on our labels must be respected. Our brands and patents are protected by copyright. All rights reserved We reserve the right to update, amend or supplement the content of the information without prior notice.