

Technical Data Sheet

Peter Kwasny GmbH, Heilbronner Str. 96
74831 Gundelsheim / Germany
Phone: +496269 95-0, Fax: +496269 95-80
www.spraymax.com / www.kwasny.com / info@kwasny.de

SprayTEC
PTFE spray
High-performance adhesive lubricant
400 ml
Art. Nr. 235030



Product

Description / Purpose

SprayTec PTFE Spray is a solid drying Teflon-based (DuPont) permanent release agent, lubricant and lubricant. The product is water-repellent and ensures permanent protection of all moving and immovable parts of Machines and systems in industry and workshops that are subject to extreme mechanical and temperature loads.

It's high Temperature resistant from -20° C to +80° C. It has excellent anti-corrosion properties and can also be used on plastics. Ideal for industrial applications, but also suitable for the areas of cars, bicycles and leisure.

Properties

- Lasting long-term protection
- For high mechanical loads
- Has good permanent lubrication
- Outstanding anti-corrosion properties
- Also suitable for plastics
- Fat free
- Water repellent

Substrate

Drives, machines, engines, chainsaws, bearings, tools, threads, drawers, instruments, cars, two-wheelers and leisure.

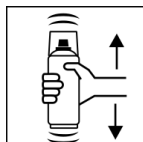
Processing

Protection measures



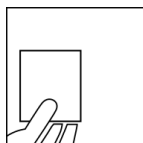
Wear personal protection equipment.
(gloves / goggles)
For more information, see safety data sheet.

Shake



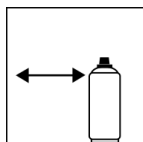
Rinse the can thoroughly for about 30 sec. before use shake.

Spray to test



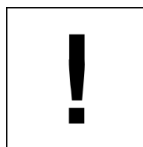
test spraying

Spraying distance



15 cm - 20 cm
Hold the can as upright as possible.

Processing conditions

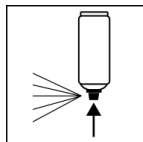


Optimum application at 18° C - 25° C.
The substrate must be dry and free of dust and grease.

Continue

Before using it on synthetic materials, test its resistance.
Surfaces to be treated must be clean, dry, free of grease and rust.
Several layers can be applied, whereby each layer has to dry on its own.
Polishing with a clean cloth improves the product properties mentioned.

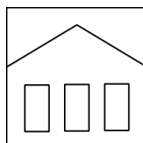
Finish



After use, turn the can upside down and spray the valve completely empty.

Additional Information

Shelf Life



The can is upright, dry and protected from chemical and mechanical influences to be stored and transported between 15 - 25° C.

The safety instructions on the can as well as all legal provisions of the storage location to note.

Disposal



The completely emptied spray cans must be disposed of in the recycling system. Cans with hardened material must be disposed of as special waste.

Note

Before use, the safety instructions must always be read carefully and observed.

The contents in this technical data sheet were created with great care and reflect our current state of knowledge. They provide the user with application-specific information and do not promise certain properties. The information is non-binding and we accept no liability for its integrity, accuracy and completeness. They do not relieve the user of their duty to check the suitability of our product for the intended purpose. The warnings printed on our labels must be respected. Our brands and patents are protected by copyright. All rights reserved We reserve the right to update, amend or supplement the content of the information without prior notice.