

Technical Data Sheet

Peter Kwasny GmbH, Heilbronner Str. 96
74831 Gundelsheim / Germany
Phone: +496269 95-0, Fax: +496269 95-80
www.spraymax.com / www.kwasny.com / info@kwasny.de

SprayTEC Brake Cleaner Spray 500 ml Art. Nr. 235021



Product

Description / Purpose

Highly effective special cleaner for all brake and clutch parts. SprayTec brake cleaner spray is a highly active special cleaner. It guarantees thorough cleaning and quick further processing or assembly of the parts, as it leaves no residue. It removes gummy lubricants from hinges and joints and quickly cleans contacts, carburettor, starter, alternator, fuel pumps as well electrical connections in the engine compartment.

Properties

- Quickly removes oil, grease, dirt and brake fluid
- Dissolves stubborn dirt (e.g. acids)
- Removes gummy lubricants
- Enables fast further processing or Assembly
- Can also be used on plastics and rubber
- Leaves no residue
- Is free of chlorinated solvents
- Does not attack styrofoam
- Enables spray tubes on the spray head precise spraying

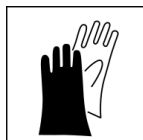
Substrate

Brake lines, brake discs, brake cylinders as well as clutch and transmission parts. Starter, alternator,

carburetor, fuel pump, engine parts, electrical connections in the engine compartment, hinges, joints as well as glass and metal.

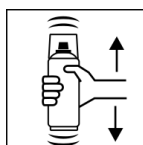
Processing

Protection measures



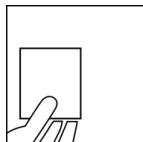
Wear personal protection equipment.
(gloves / goggles)
For more information, see safety data sheet.

Shake



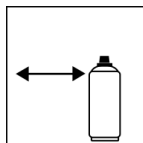
Rinse the can thoroughly for about 30 sec. before use shake.

Spray to test



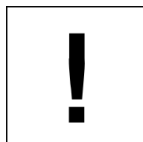
test spraying

Spraying distance



15 cm - 20 cm
Hold the can as upright as possible.

Processing conditions

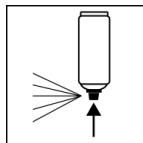


Optimum application at 18° C - 25° C.
The substrate must be dry and free of dust and grease.

Continue

Spray dirty parts intensively and Allow solvents to drain or evaporate. In the case of heavy soiling, spray process repeat accordingly.

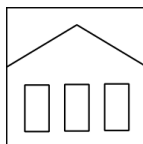
Finish



After use, turn the can upside down and spray the valve completely empty.

Additional Information

Shelf Life



The can is upright, dry and protected from chemical and mechanical influences to be stored and transported between 15 - 25° C.
The safety instructions on the can as well as all legal provisions of the storage location to note.

Disposal



The completely emptied spray cans must be disposed of in the recycling system. Cans with hardened material must be disposed of as special waste.

Note

Before use, the safety instructions must always be read carefully and observed.

The contents in this technical data sheet were created with great care and reflect our current state of knowledge. They provide the user with application-specific information and do not promise certain properties. The information is non-binding and we accept no liability for its integrity, accuracy and completeness. They do not relieve the user of their duty to check the suitability of our product for the intended purpose. The warnings printed on our labels must be respected. Our brands and patents are protected by copyright. All rights reserved We reserve the right to update, amend or supplement the content of the information without prior notice.