

Technical Data Sheet

Peter Kwasny GmbH, Heilbronner Str. 96
74831 Gundelsheim / Germany
Phone: +496269 95-0, Fax: +496269 95-80
www.spraymax.com / www.kwasny.com / info@kwasny.de

SprayTEC Foam Cleaner Spray 500 ml Art. Nr. 235020



Product

Description / Purpose

SprayTec Super Foam Cleaner Spray is a Highly effective, quick-drying foam cleaner for a wide range of indoor and outdoor applications. Can be used universally in the areas of cars, offices, households, workshops and industry.

The high cleaning power guarantees crystal-clear windows, mirrors, headlights, etc. Ideally suited in the car for thorough cleaning of seats, Floor coverings, door and headliner panels and Rims.

SprayTec foam cleaner spray has a pleasant, fresh scent and is compatible with all types of rubber and plastic.

Properties

- Universally applicable
- Fantastic cleaning power
- Compatible with all types of rubber and plastic
- Effective removal of stuck insects
- Reliably removes nicotine deposits and bird droppings
- Has a pleasant, fresh scent

Substrate

Glass, painted surfaces, plastic, upholstery, rubber, chrome and porcelain, mirrors, nicotine deposits and bird droppings, grease, dirt, etc., cleans car, seats,

door and headlining panels, wheel rims, headlights, discs etc. Office and household, workshop and industry.

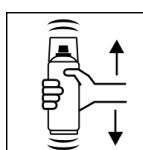
Processing

Protection measures



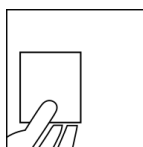
Wear personal protection equipment.
(gloves / goggles)
For more information, see safety data sheet.

Shake



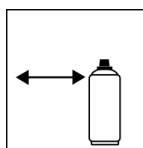
Rinse the can thoroughly for about 30 sec. before use shake.

Spray to test



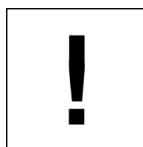
test spraying

Spraying distance



20 cm - 30 cm
Hold the can as upright as possible.

Processing conditions

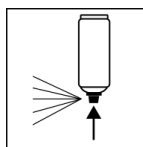


Optimum application at 18° C - 25° C.
The substrate must be dry and dust-free.

Continue

Spray with SprayTec super foam cleaner, leave to work for a short time and wipe with a cloth Rub or polish out. In the case of stubborn dirt, repeat the spraying process accordingly.

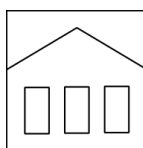
Finish



After use, turn the can upside down and spray the valve completely empty.

Additional Information

Shelf Life



The can is upright, dry and protected from chemical and mechanical influences to be stored and transported between 15 - 25° C.
The safety instructions on the can as well as all legal provisions of the storage location to note.

Disposal



The completely emptied spray cans must be disposed of in the recycling system. Cans with hardened material must be disposed of as special waste.

Note

Before use, the safety instructions must always be read carefully and observed.

The contents in this technical data sheet were created with great care and reflect our current state of knowledge. They provide the user with application-specific information and do not promise certain properties. The information is non-binding and we accept no liability for its integrity, accuracy and completeness. They do not relieve the user of their duty to check the suitability of our product for the intended purpose. The warnings printed on our labels must be respected. Our brands and patents are protected by copyright. All rights reserved We reserve the right to update, amend or supplement the content of the information without prior notice.