

# Technical Data Sheet

Peter Kwasny GmbH, Heilbronner Str. 96  
74831 Gundelsheim / Germany  
Phone: +496269 95-0, Fax: +496269 95-80  
www.spraymax.com / www.kwasny.com / info@kwasny.de

## SprayTEC Vaseline spray 400 ml Art. Nr. 235012



## Product

### Description / Purpose

SprayTec Vaseline Spray is a high-quality, Vaseline-based lubricant and protective agent, which also has the best corrosion-inhibiting effect. Ideal as a maintenance and care product that can be used universally on all moving parts.

The petroleum jelly spray displaces moisture and prevents the formation of rust in the long term. Ideally suited for the areas of cars, motorcycles, two-wheelers, furniture, industry and leisure.

### Properties

- Particularly suitable for all plug-in and screw connections
- Can be used universally for all moving parts
- Outstanding lubricating properties
- Very good protection against corrosion
- Forms a thin, acid-free protective layer
- Provides long-term protection against rust and wear
- Prevents doors from freezing on door rubber
- Is moisture displacing
- Ideal long-term maintenance product
- Enables spray tubes on the spray head precise spraying

## Substrate

Window and door fittings, garden tools, wooden and plastic parts, Battery terminals, plug and Screw

connections, antennas and metal parts (copper, brass, chrome, steel) around the Car, motorcycle, two-wheeler, furniture, industry and leisure sectors.

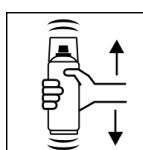
## Processing

### Protection measures



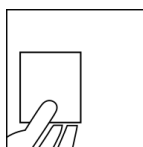
Wear personal protection equipment.  
(gloves / goggles)  
For more information, see safety data sheet.

### Shake



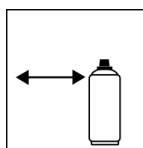
Rinse the can thoroughly for about 30 sec. before use shake.

### Spray to test



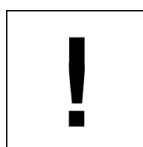
test spraying

### Spraying distance



20 cm - 30 cm  
Hold the can as upright as possible.

### Processing conditions

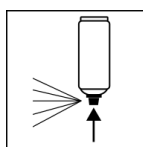


Optimum application at 18° C - 25° C.  
The substrate must be dry and dust-free.

### Continue

Areas to be treated at a distance of Spray carefully and evenly from a distance of approx. 20 - 30 cm.

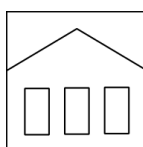
### Finish



After use, turn the can upside down and spray the valve completely empty.

## Additional Information

### Shelf Life



The can is upright, dry and protected from chemical and mechanical influences to be stored and transported between 15 - 25° C.

The safety instructions on the can as well as all legal provisions of the storage location to note.

## Disposal



The completely emptied spray cans must be disposed of in the recycling system. Cans with hardened material must be disposed of as special waste.

## Note

Before use, the safety instructions must always be read carefully and observed.

The contents in this technical data sheet were created with great care and reflect our current state of knowledge. They provide the user with application-specific information and do not promise certain properties. The information is non-binding and we accept no liability for its integrity, accuracy and completeness. They do not relieve the user of their duty to check the suitability of our product for the intended purpose. The warnings printed on our labels must be respected. Our brands and patents are protected by copyright. All rights reserved We reserve the right to update, amend or supplement the content of the information without prior notice.